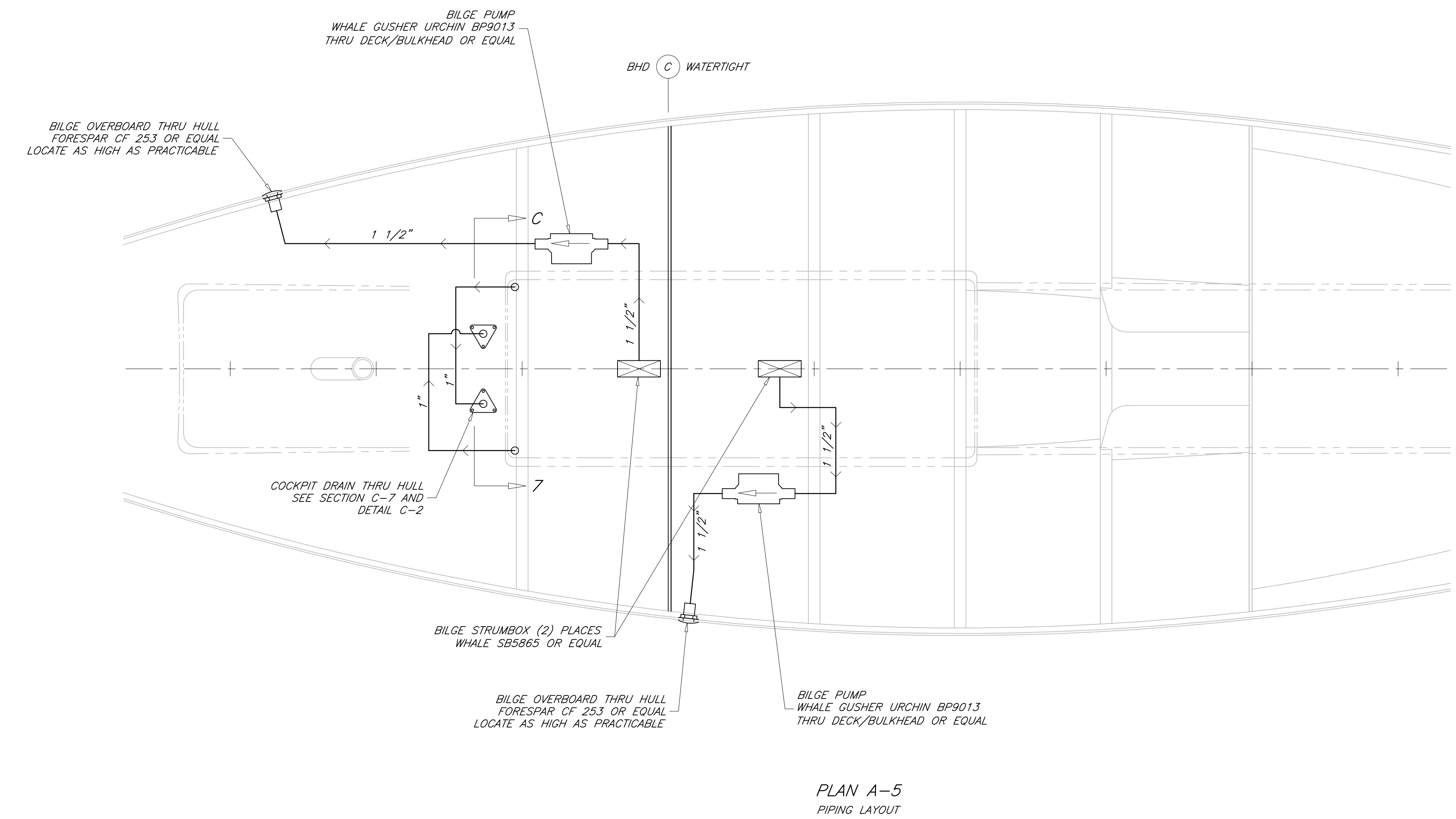
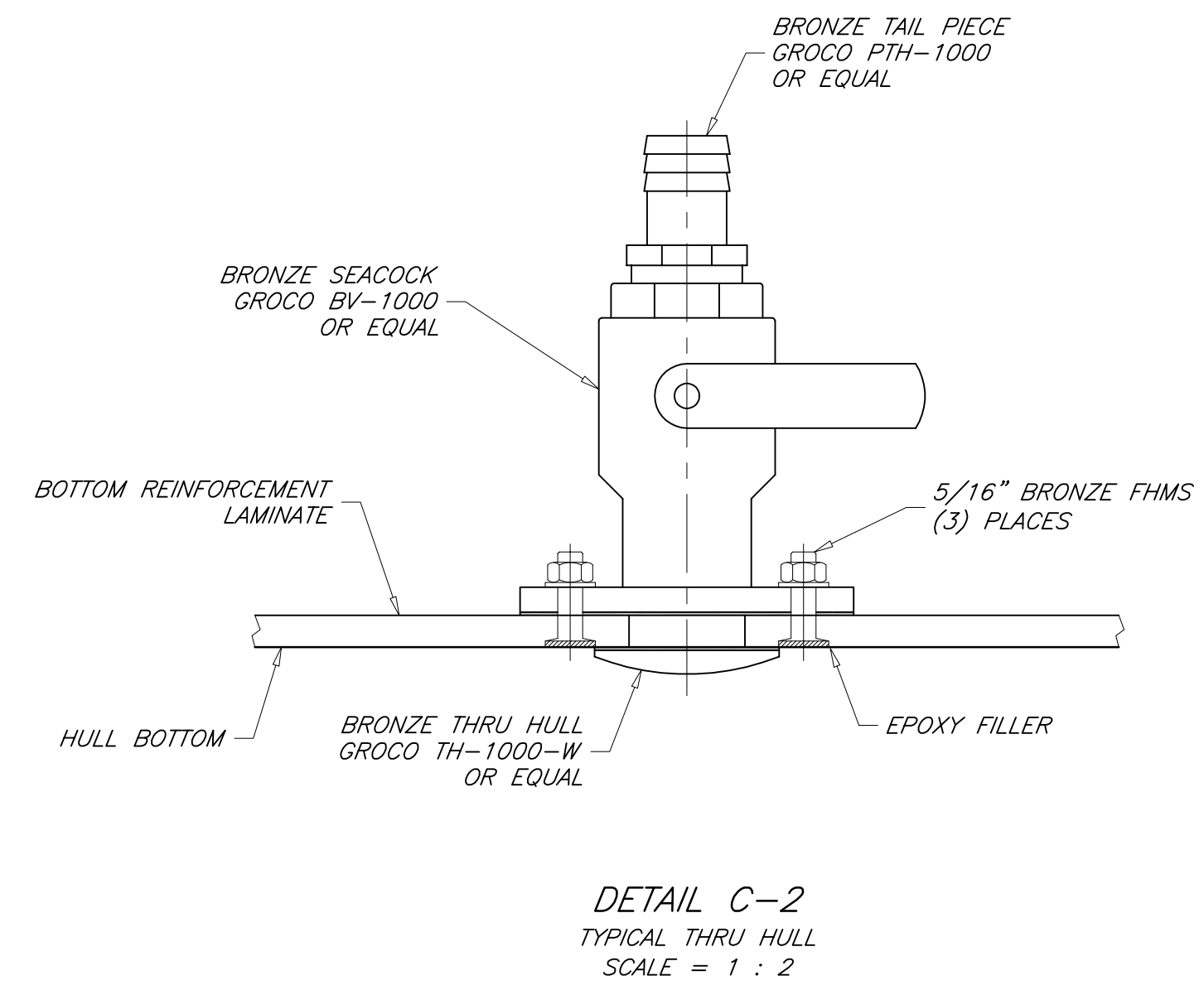
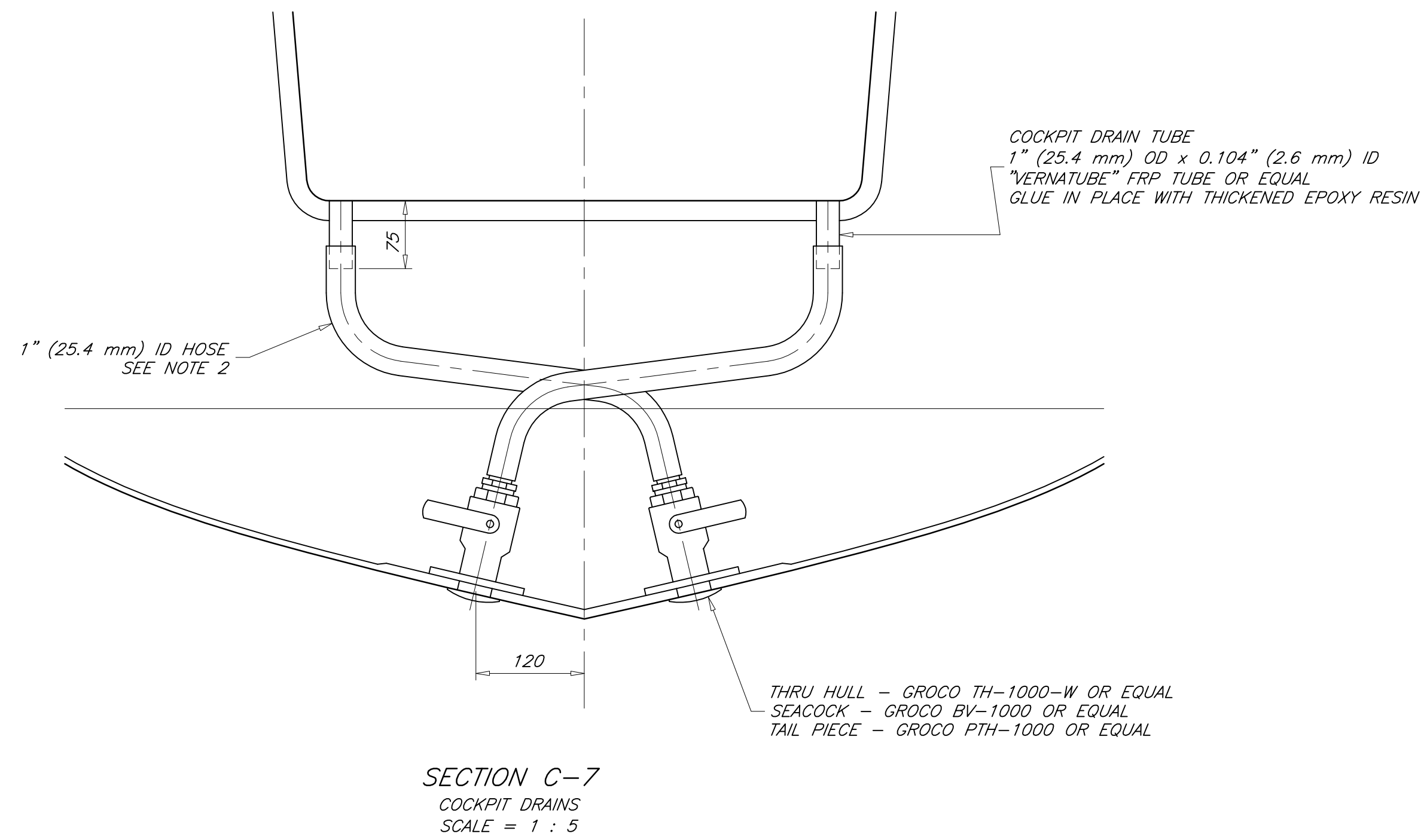


REVISIONS				
ZONE	REV	DESCRIPTION	DATE	APPROVED
ALL	-	ORIGINAL ISSUE	17 FEB 10	P. KOTZEBUE
ALL	A	GENERAL DESIGN UPDATE	07 SEP 10	P. KOTZEBUE



**GENERAL NOTES**

- EQUIPMENT IS SHOWN IN GENERALIZED LOCATIONS. VERIFY ACTUAL LOCATIONS AT SHIP.
- BILGE AND COCKPIT DRAIN PIPING IS SHIELDS SERIES 148 MULTI-PURPOSE VINYL HOSE OR EQUAL.
- ALL HOSE CONNECTIONS TO HAVE DOUBLE SST HOSE CLAMPS.
- DO NOT USE BALL VALVES ON THRU HULL CONNECTIONS. USE ONLY SEACOCKS WITH THREADS COMPATIBLE WITH THRU HULL FITTINGS.
- BEH THRU HULL FITTINGS AND SEACOCKS IN 3M 101 POLYSULFIDE OR EQUAL MARINE SEALANT. DO NOT USE 3M 5200 IN THIS APPLICATION.



THIS DRAWING REMAINS THE PROPERTY OF PAUL R. KOTZEBUE, PE AND MAY NOT BE USED FOR ANY PURPOSE WITHOUT WRITTEN CONSENT.

NO		TITLE		DWG NO	
REFERENCES					
STOCK PLANS					
8.50 METER SKERRY CRUISER					
PIPING PLAN					
DRAFTER:	PK	DATE:	17 FEB 10	SIZE:	ARCH D
CHECKER:	PK	DATE:	17 FEB 10	SCALE:	NONE
				DWG. NO.	06-E1
				REV:	A
				SHEETS:	1 OF 1