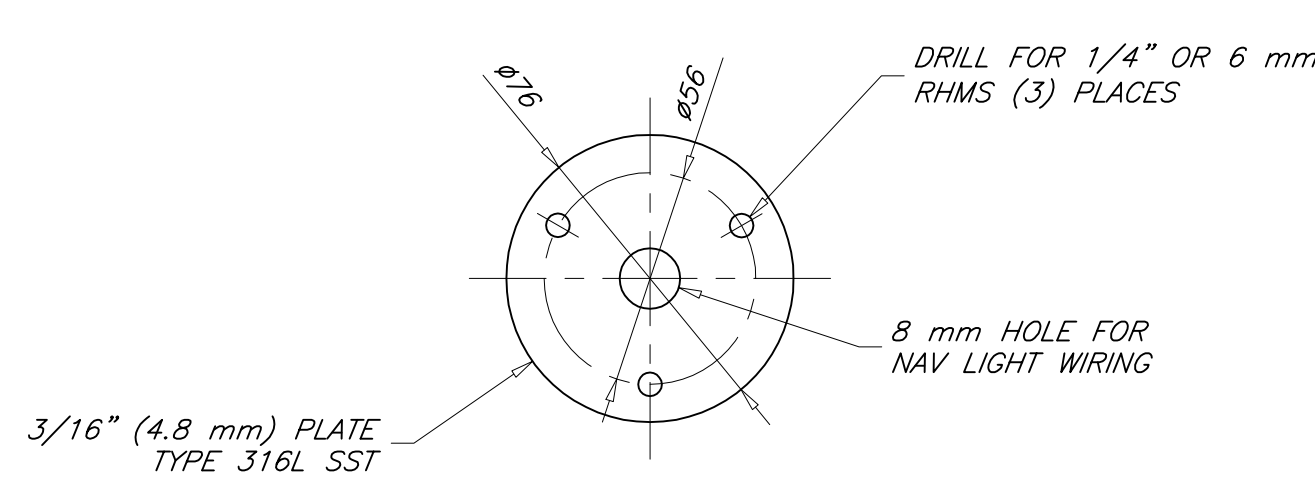
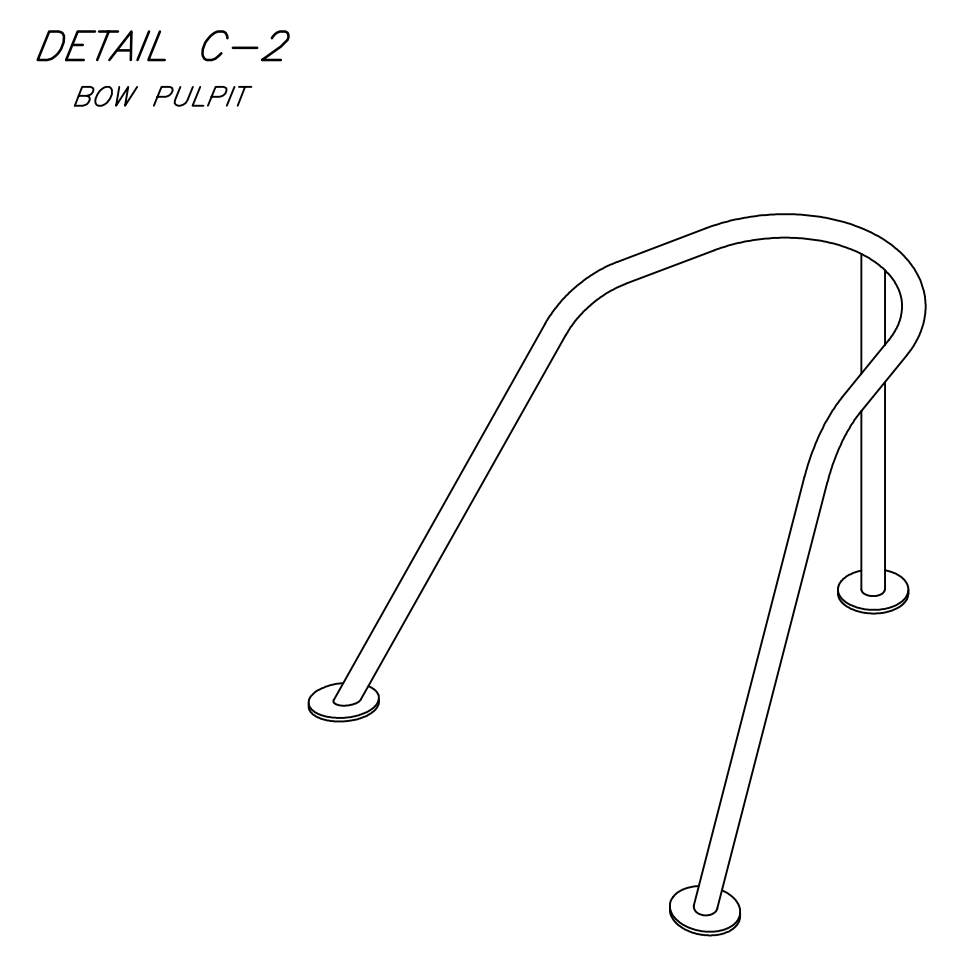
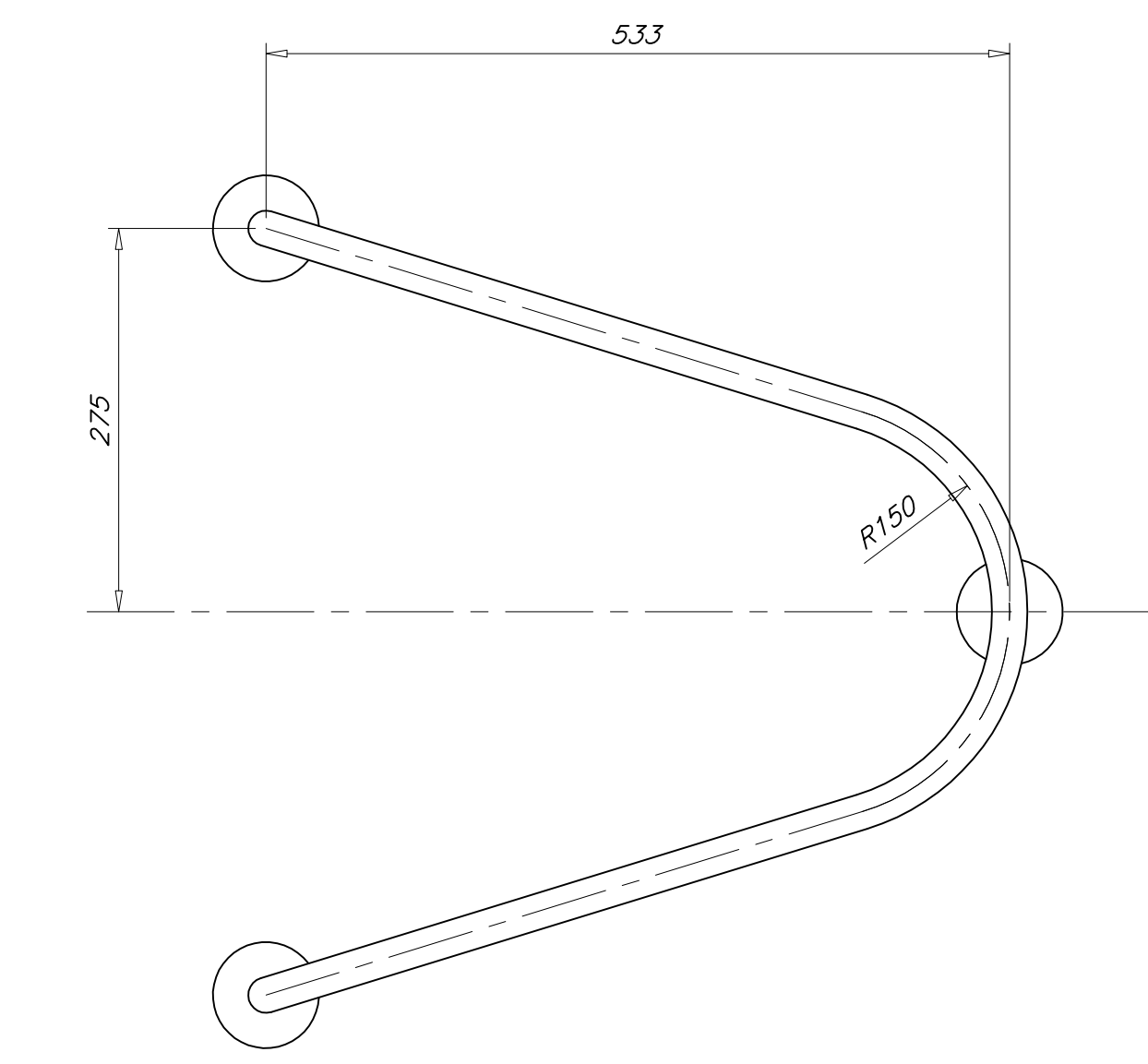
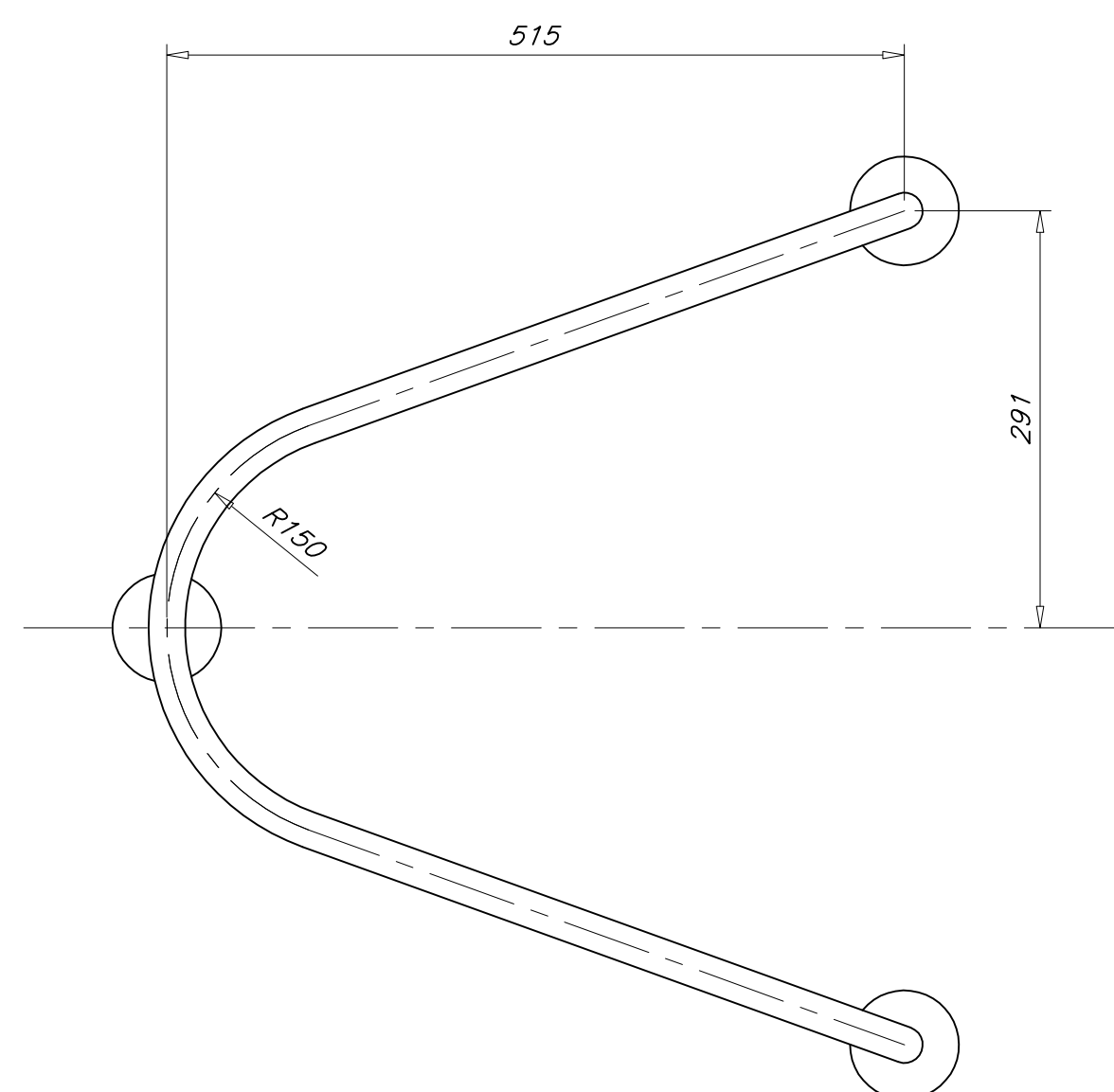
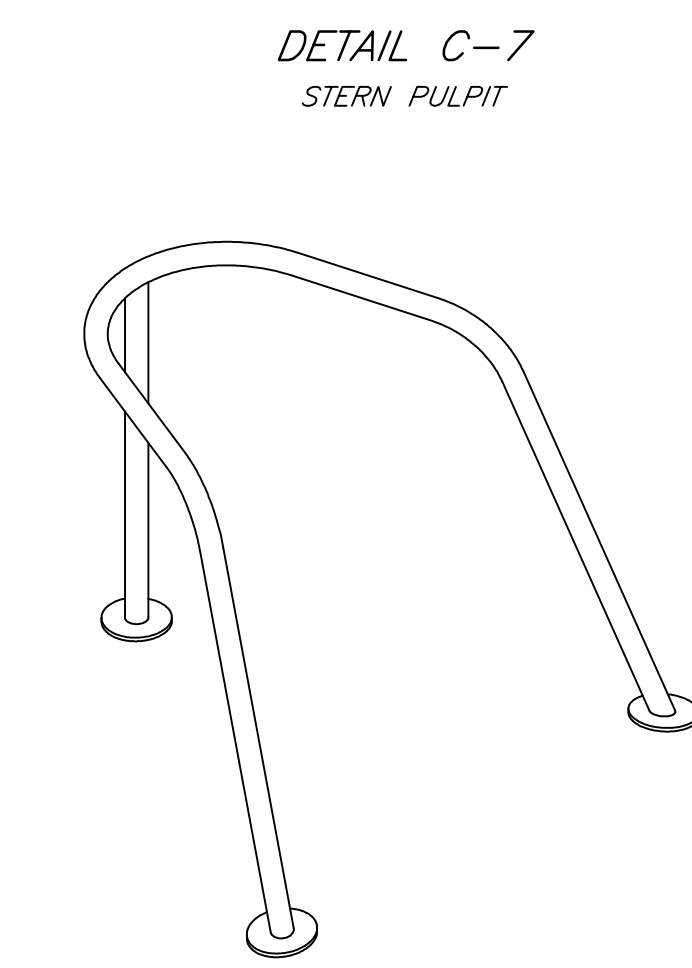
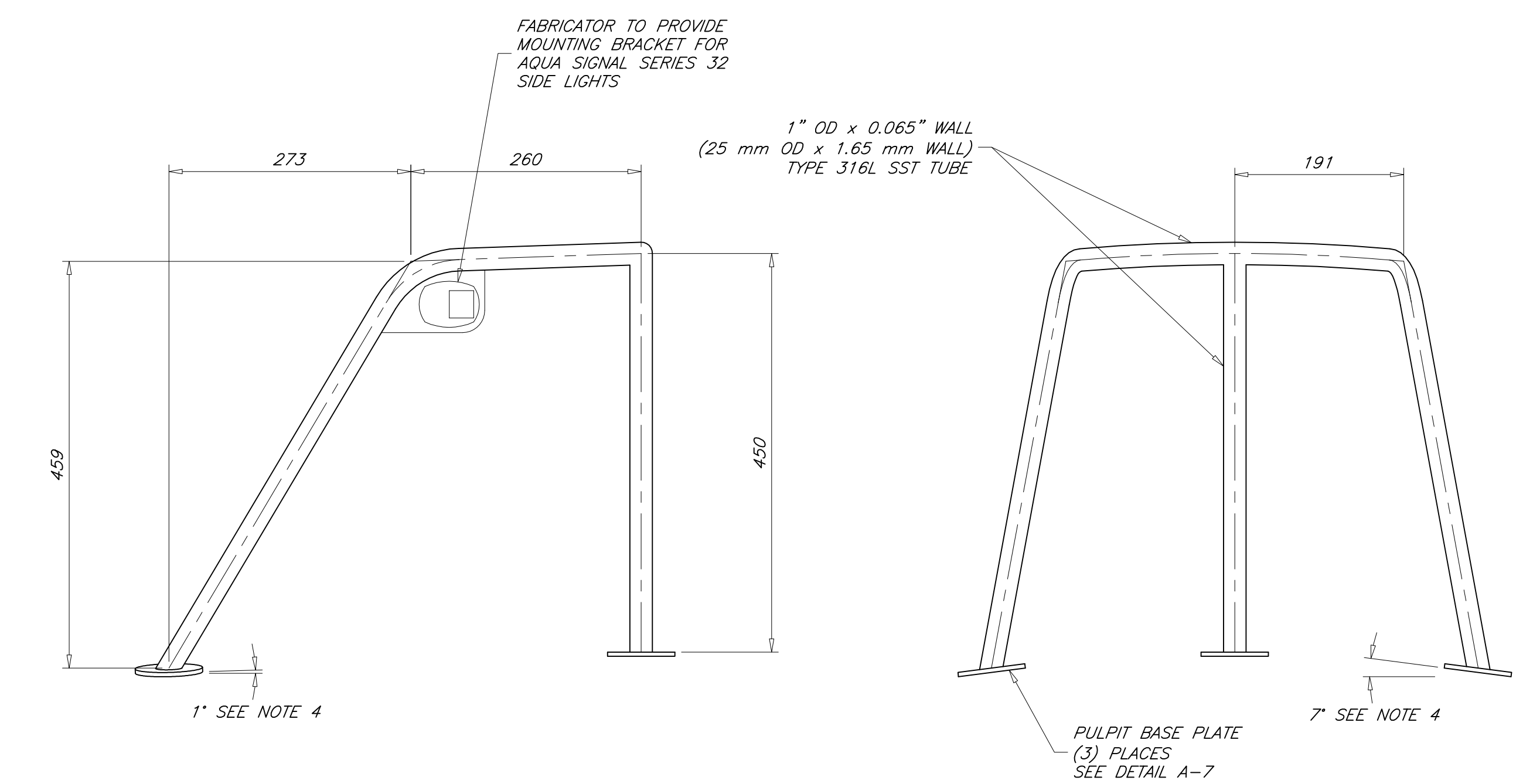
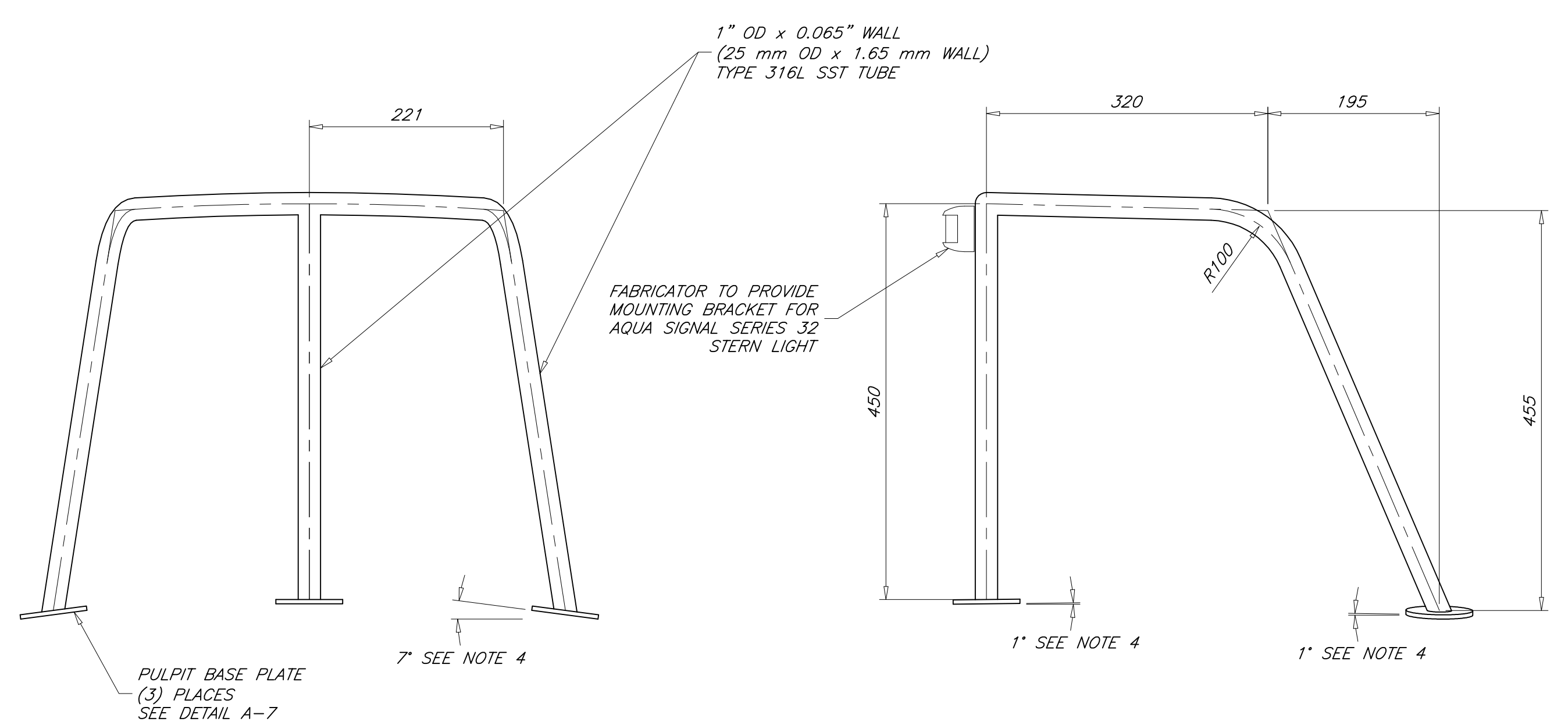


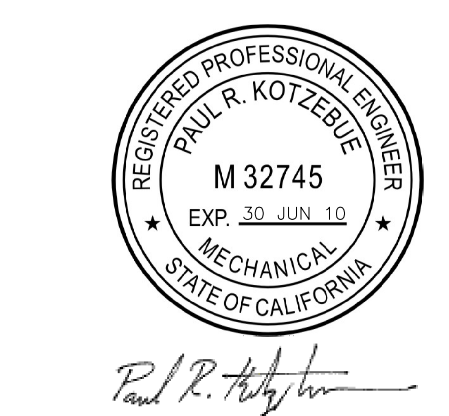
REVISIONS				
ZONE	REV	DESCRIPTION	DATE	APPROVED
ALL	-	ORIGINAL ISSUE	14 FEB 10	P. KOTZEBUE
ALL	A	REVISE PULPIT DIMENSIONS	06 SEP 10	P. KOTZEBUE



**DETAIL A-7**  
PULPIT BASE PLATE  
(6) REQUIRED PLUS (6) BACKING PLATES  
(12) TOTAL

**GENERAL NOTES**

1. WELDED PARTS TO BE JOINED BY CONTINUOUS FILLET WELDS. WELD PROCEDURE AND SIZE OF WELDS TO BE DETERMINED BY FABRICATOR.
2. MATERIAL IS TYPE 316 OR 316L STAINLESS STEEL. MINIMUM TENSILE STRENGTH = 415 MPa (60,000 psi) MINIMUM SHEAR STRENGTH = 275 MPa (40,000 psi) MINIMUM BEARING STRENGTH = 620 MPa (90,000 psi)
3. FASTENERS ARE TYPE 316 STAINLESS STEEL.
4. BASE PLATE ANGLES ARE FOR REFERENCE ONLY. VERIFY ACTUAL BASE PLATE ANGLES AT SHIP.
5. FABRICATOR TO PROVIDE LIFELINE ATTACHMENTS ON BOW PULPIT AND STERN PULPIT FOR UPPER AND INTERMEDIATE LIFELINES.
6. SEE REFERENCE 1 FOR PULPIT LOCATIONS.



THIS DRAWING REMAINS THE PROPERTY OF PAUL R. KOTZEBUE, PE AND MAY NOT BE USED FOR ANY PURPOSE WITHOUT WRITTEN CONSENT.

1	DECK PLAN	06-B2
NO	TITLE	DWG NO
REFERENCES		
STOCK PLANS		
8.50 METER SKERRY CRUISER		
BOW AND STERN PULPITS		
DRAFTER: PK	DATE: 14 FEB 10	SCALE: ARCH D
CHECKER: PK	DATE: 14 FEB 10	SCALE: 1 : 5
REV: A	DWG NO: 06-D3	SHEET: 1 OF 1