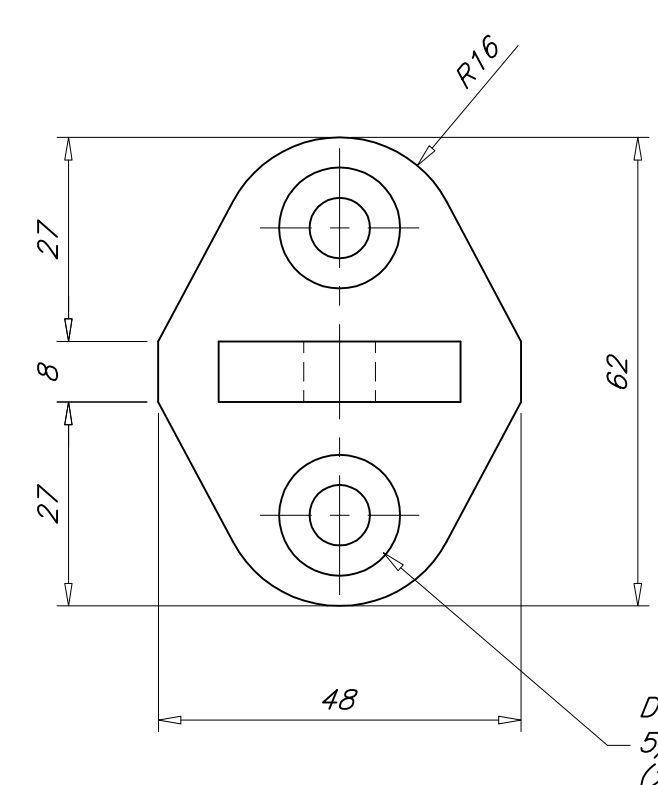
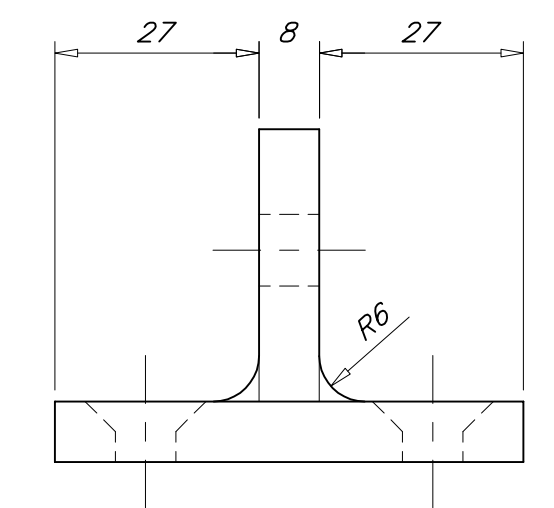
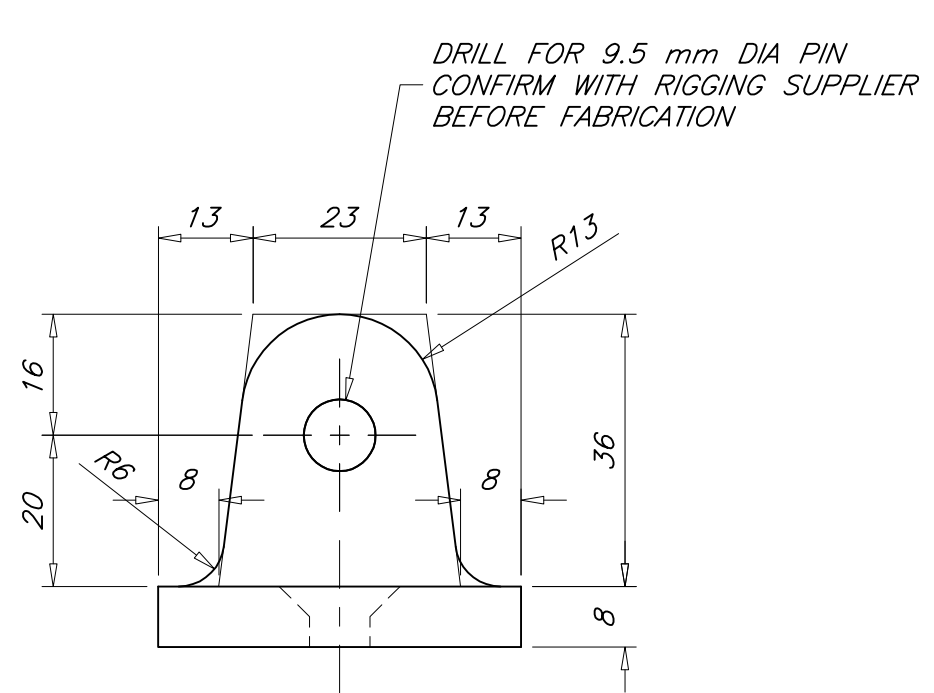
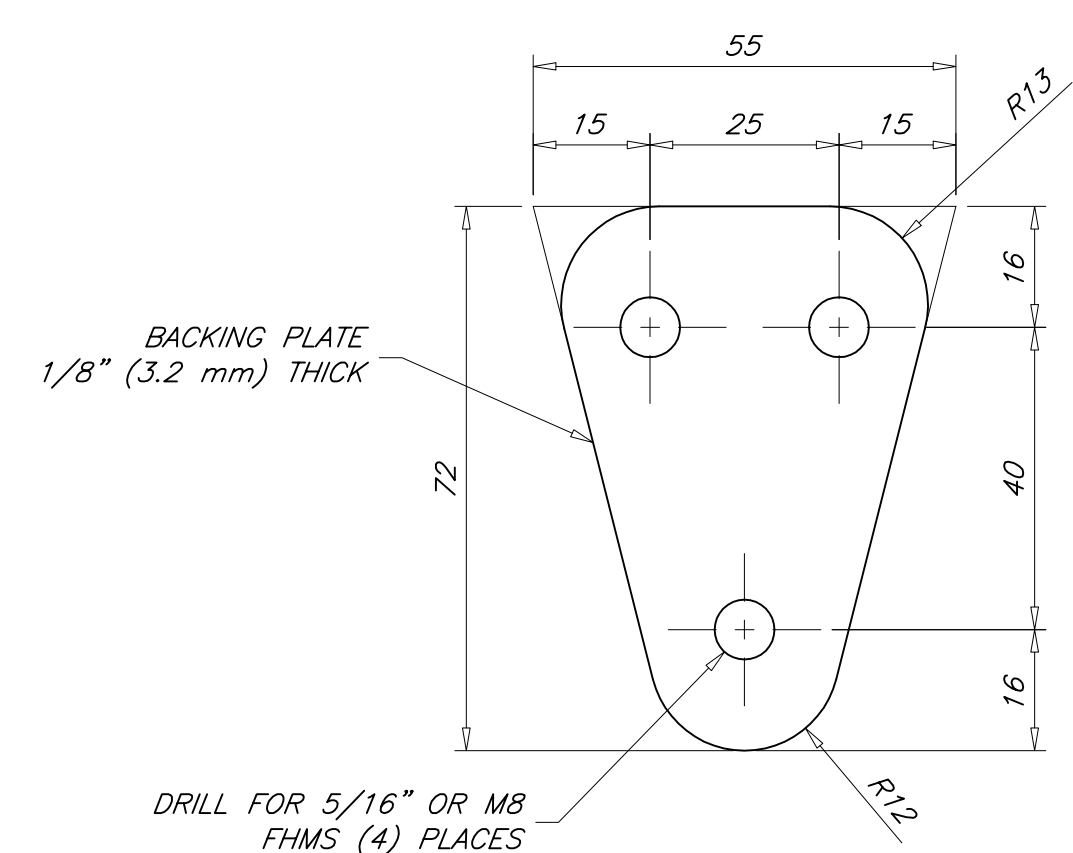
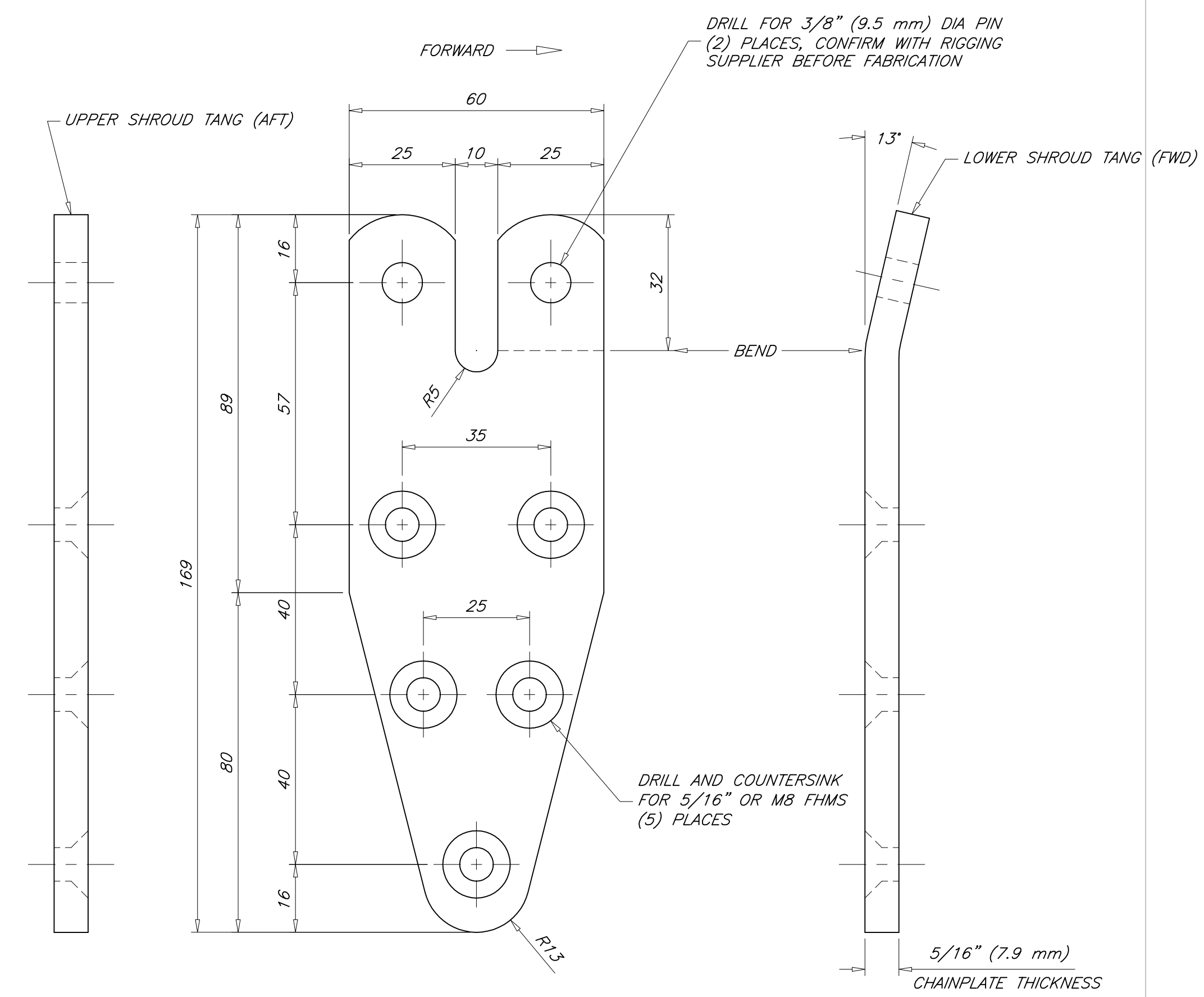


REVISIONS				
ZONE	REV	DESCRIPTION	DATE	APPROVED
ALL	-	ORIGINAL ISSUE	13 FEB 10	P. KOTZEBUE
B-4	A	REVISE SHROUD CHAINPLATES	06 SEP 10	P. KOTZEBUE

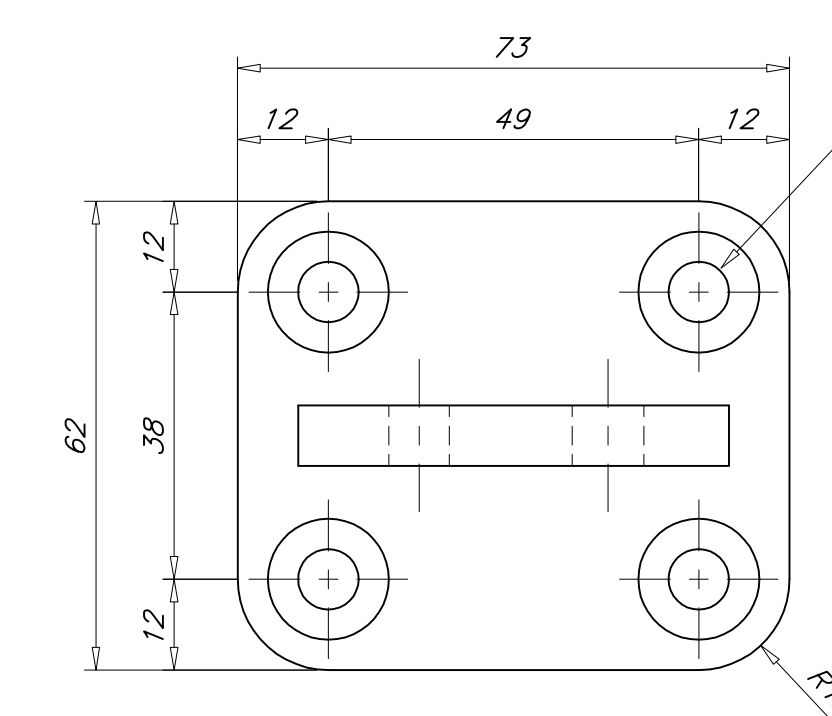
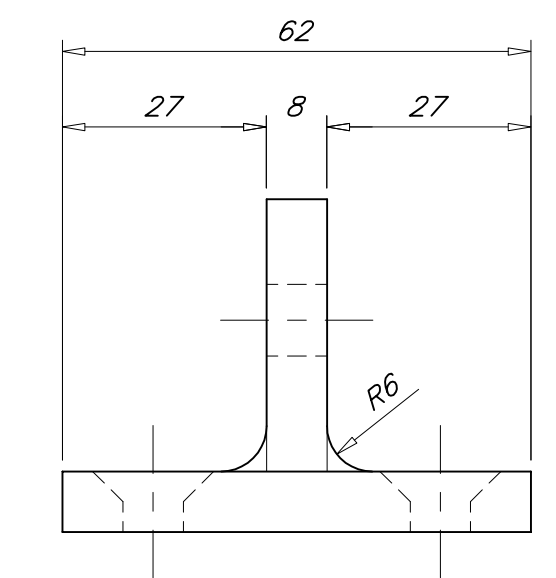
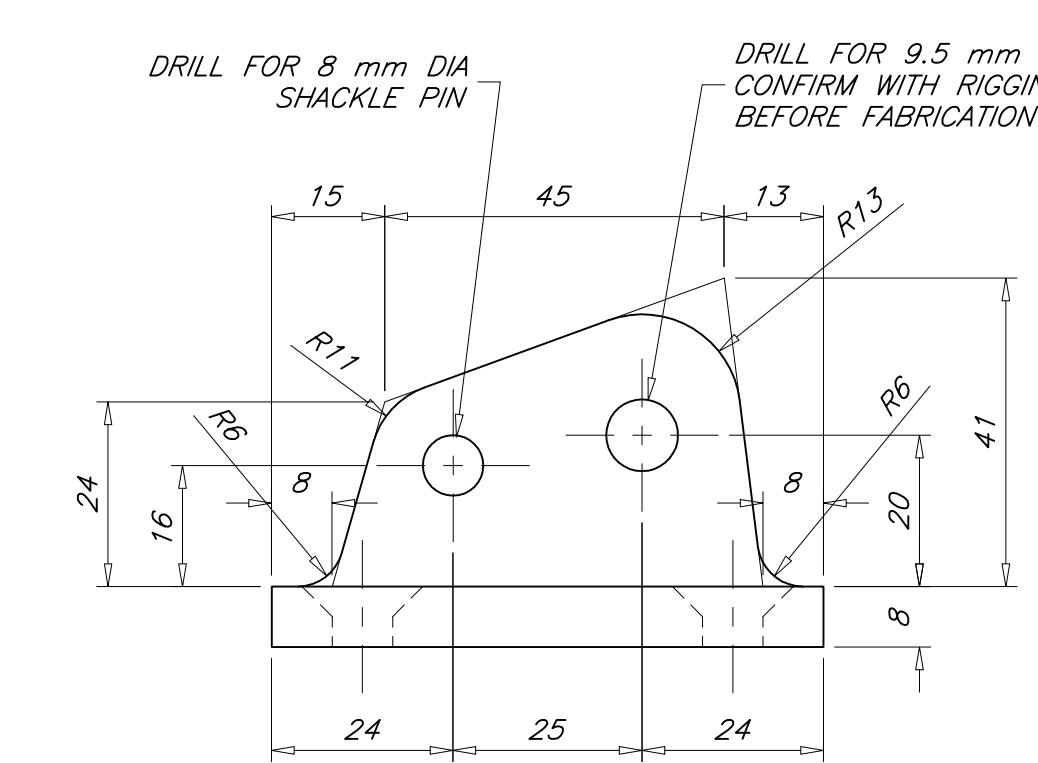


DRILL AND COUNTERSINK FOR 5/16" OR M8 FHMS (2) PLACES

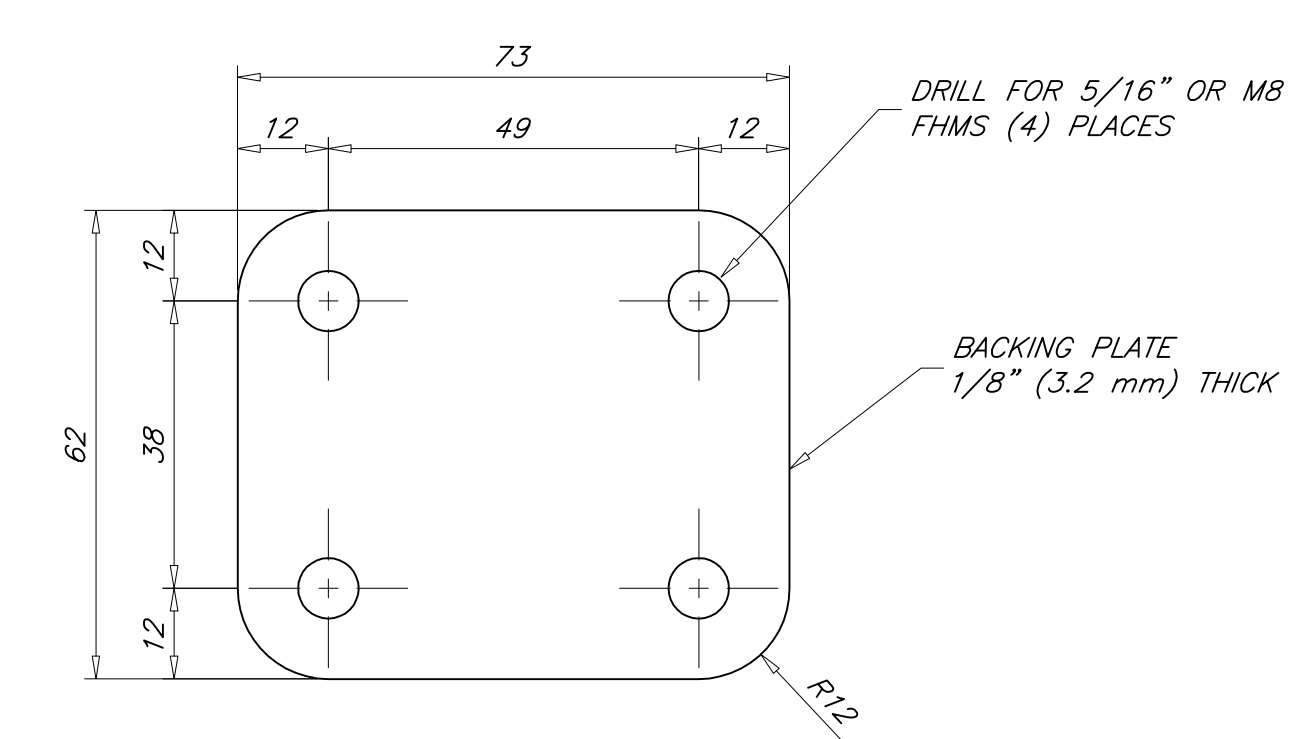
DETAIL C-7
BACKSTAY CHAINPLATE



DETAIL B-4
SHROUD CHAINPLATES
(2) REQUIRED
STBD SIDE SHOWN
PORT SIDE IS MIRROR IMAGE



DETAIL C-1
FORESTAY CHAINPLATE



GENERAL NOTES

- EACH CHAINPLATE IS TO BE CNC MACHINED FROM A SINGLE BILLET. FABRICATOR TO DETERMINE HOLE DIAMETER FOR PINS. PINS MUST SLIDE EASILY INTO HOLES. CHAMFER ALL HARD CORNERS 0.5 mm.
- MATERIAL IS SILICON BRONZE.
MINIMUM TENSILE STRENGTH = 386 MPa (55,000 psi)
MINIMUM SHEAR STRENGTH = 275 MPa (40,000 psi)
- FASTENERS ARE SILICON BRONZE. DO NOT USE STAINLESS STEEL FASTENERS.
- SEE REFERENCE 2 FOR CHAINPLATE LOCATIONS.



THIS DRAWING REMAINS THE PROPERTY OF PAUL R. KOTZEBUE, PE AND MAY NOT BE USED FOR ANY PURPOSE WITHOUT WRITTEN CONSENT.

2	DECK PLAN	06-B2
1	FRAMING PLAN	06-C1
NO	TITLE	DWG NO

REFERENCES

STOCK PLANS
8.50 METER SKERRY CRUISER
CHAINPLATES

DRAFTER: PK		DATE: 13 FEB 10	SIZE: ARCH D	DWG NO: 06-D3	REV: A
CHECKER: PK		DATE: 13 FEB 10	SCALE: FULL SIZE	SWBS: --	SHEET: 1 OF 1

PAUL R. KOTZEBUE, PE
MECHANICAL ENGINEER
Encinitas, California USA