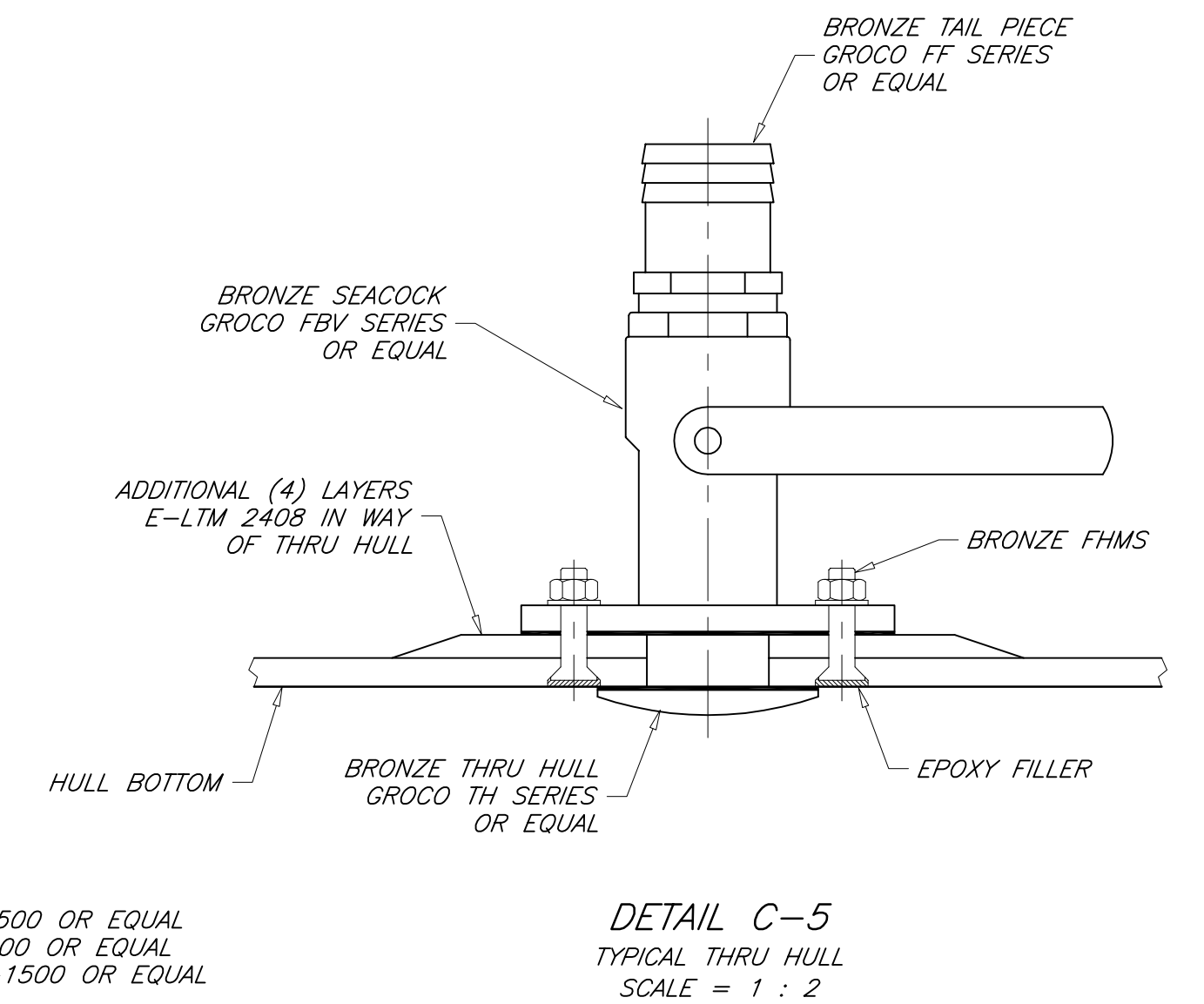
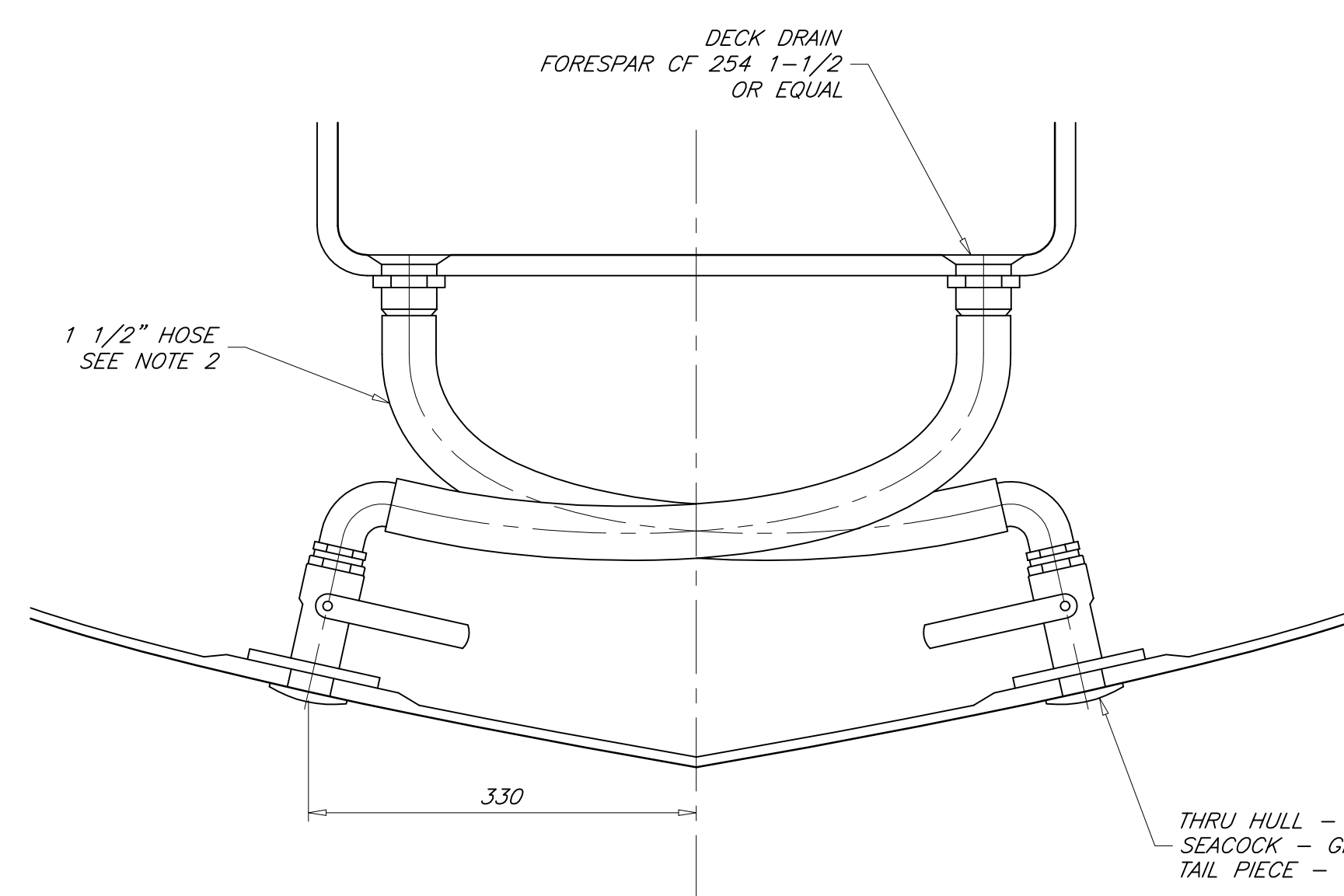
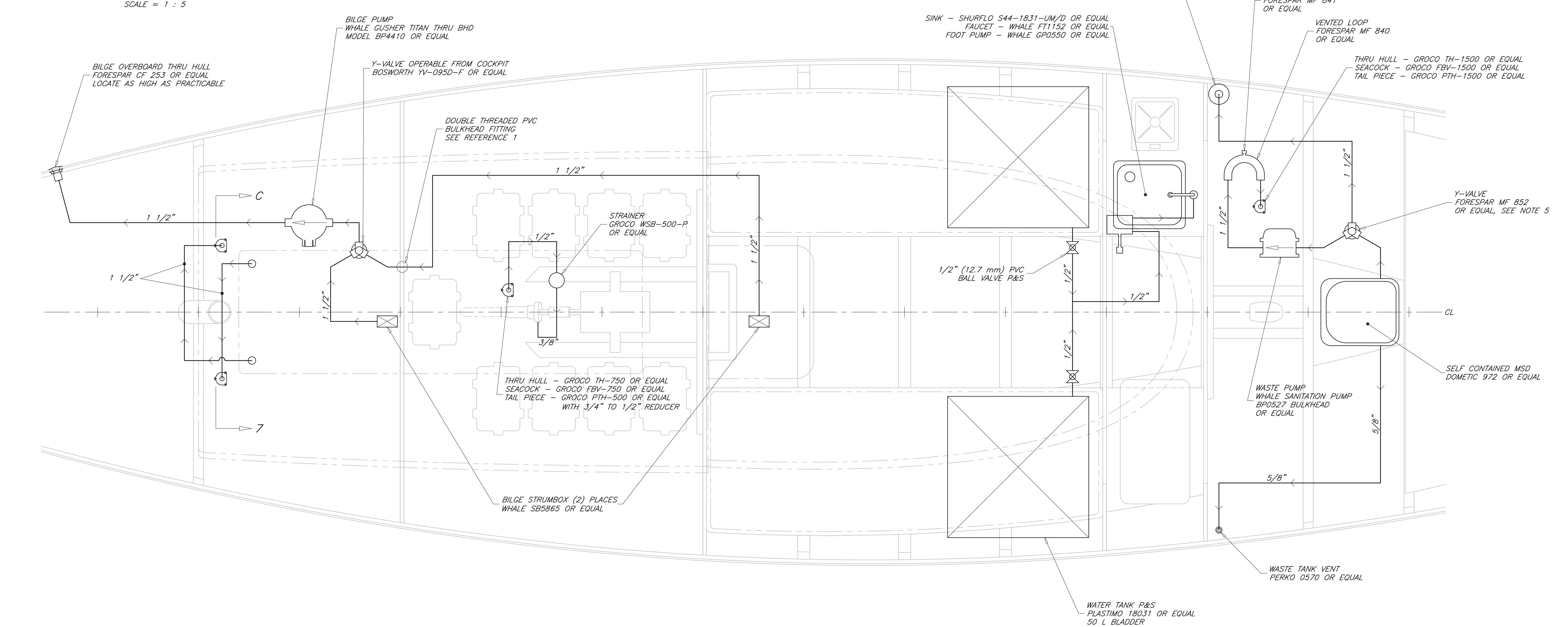


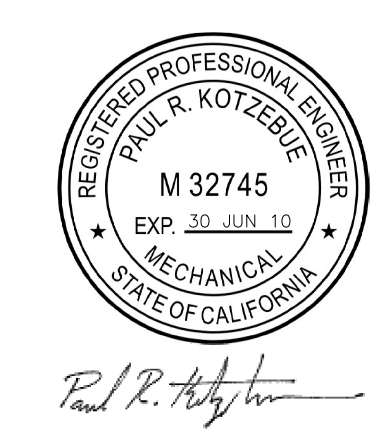
REVISIONS				
ZONE	REV	DESCRIPTION	DATE	APPROVED
ALL	-	ORIGINAL ISSUE	25 MAY 10	P. KOTZEBUE



- GENERAL NOTES**
- EQUIPMENT IS SHOWN IN GENERALIZED LOCATIONS. DETERMINE ACTUAL LOCATION AT SHIP.
  - SANITATION PIPING IS SHIELDS POLY X OR EQUAL HOSE. BILGE AND COCKPIT DRAIN PIPING IS SHIELDS SERIES 141 MULTIFLEX OR EQUAL HOSE.
  - DO NOT USE BALL VALVES ON THRU HULL CONNECTIONS. USE ONLY SEACOCKS WITH THREADS COMPATIBLE WITH THRU HULL FITTINGS.
  - BED THRU HULL FITTINGS AND SEACOCKS IN 3M 101 POLYSULFIDE OR EQUAL MARINE SEALANT. DO NOT USE 3M 5200 IN THIS APPLICATION.
  - BILGE AND SANITATION SYSTEM Y-VALVES SHOULD BE LOCATED ABOVE 1800 DWL.



PLAN A-5  
PIPING LAYOUT



THIS DRAWING REMAINS THE PROPERTY OF PAUL R. KOTZEBUE, PE AND MAY NOT BE USED FOR ANY PURPOSE WITHOUT WRITTEN CONSENT.

1	MACHINERY ARRANGEMENT	05-E1
NO	TITLE	DWG NO
REFERENCES		
STOCK PLANS		
12.9 METER SKERRY CRUISER PIPING SCHEMATIC		
DRAFTER: PK	DATE: 25 MAY 10	SIZE: ARCH D
CHECKER: PK	DATE: 25 MAY 10	SCALE: NONE
DWG NO: 05-E2	REV: -	SHEET: 1 OF 1