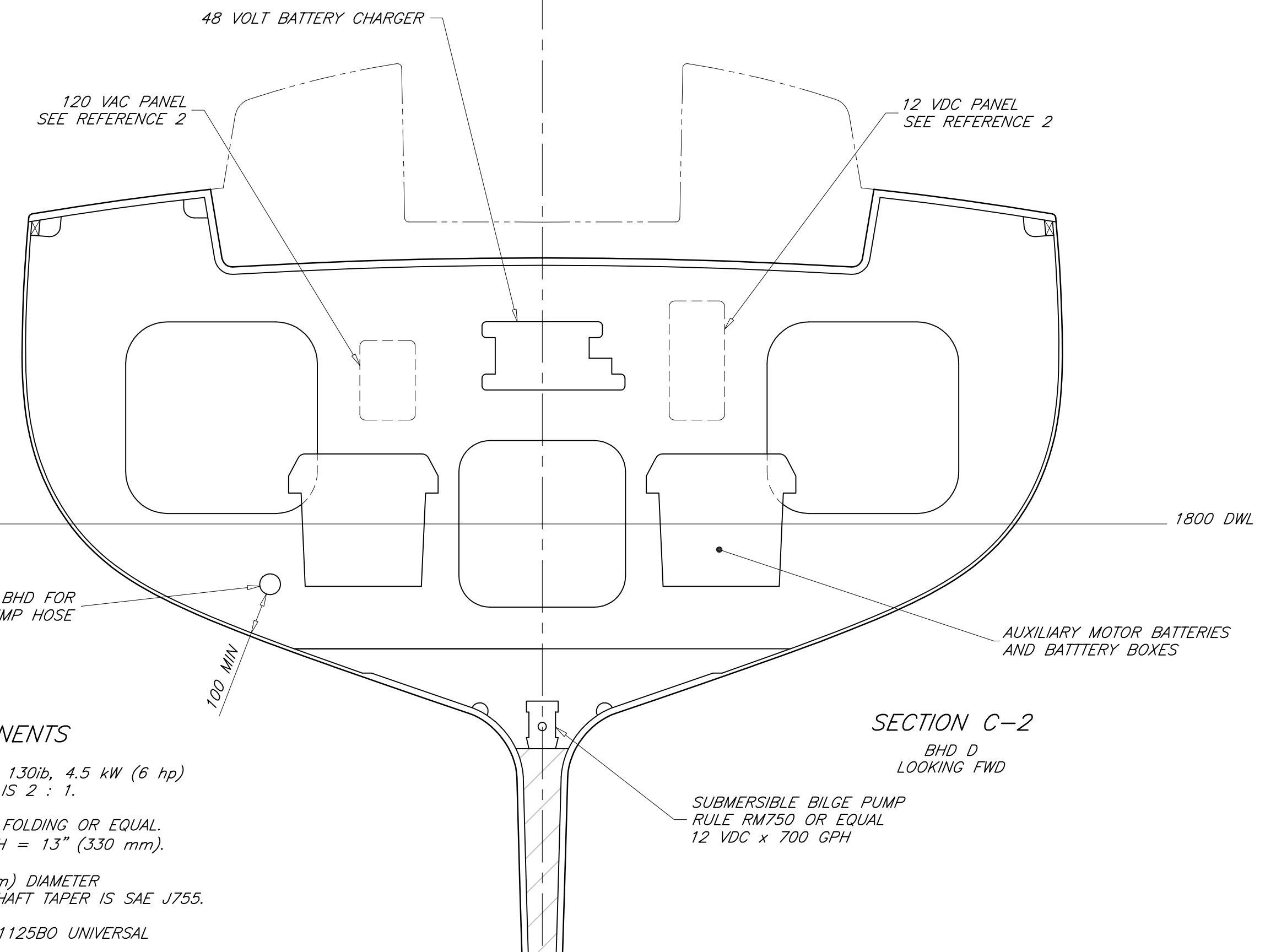
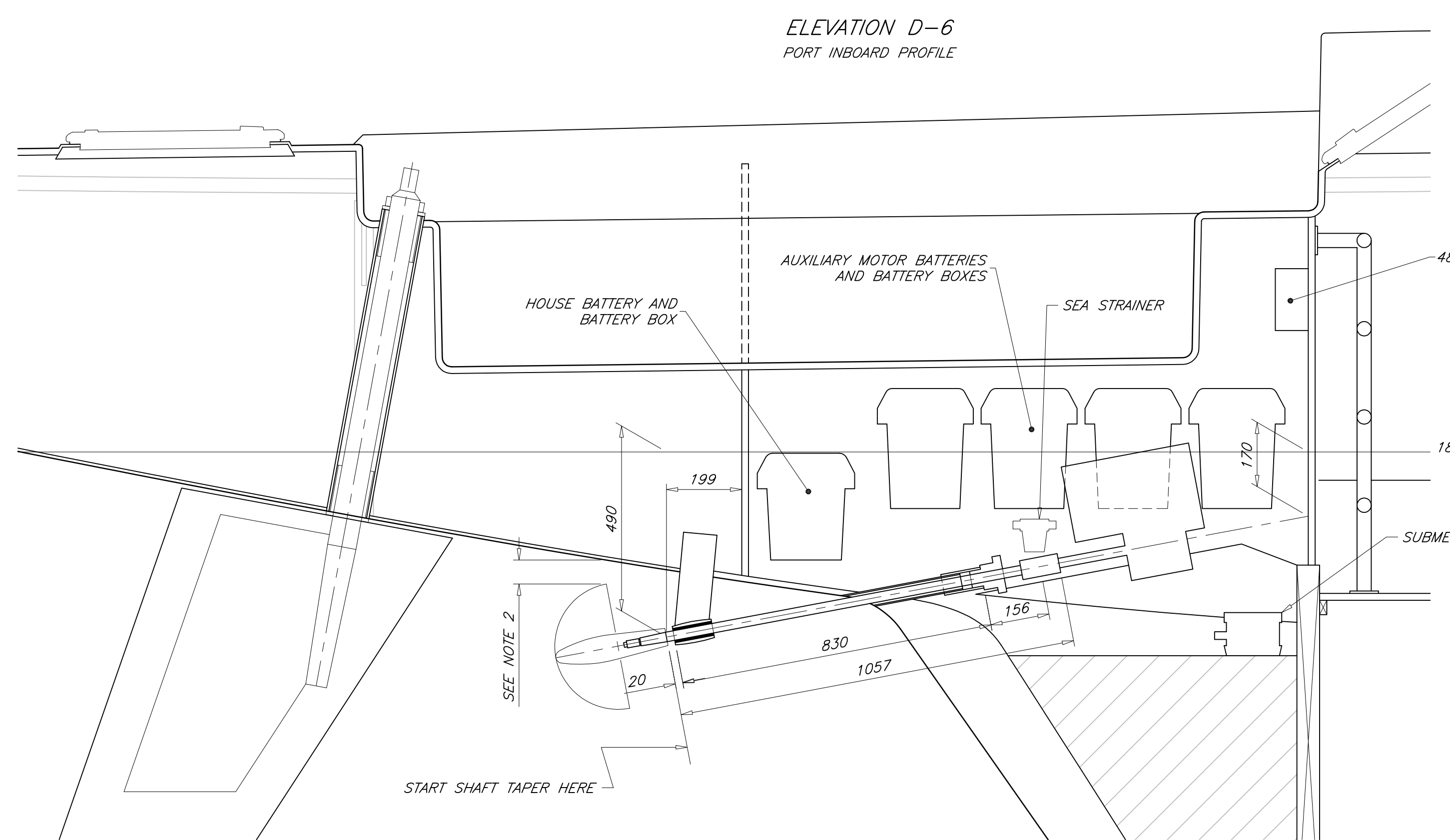
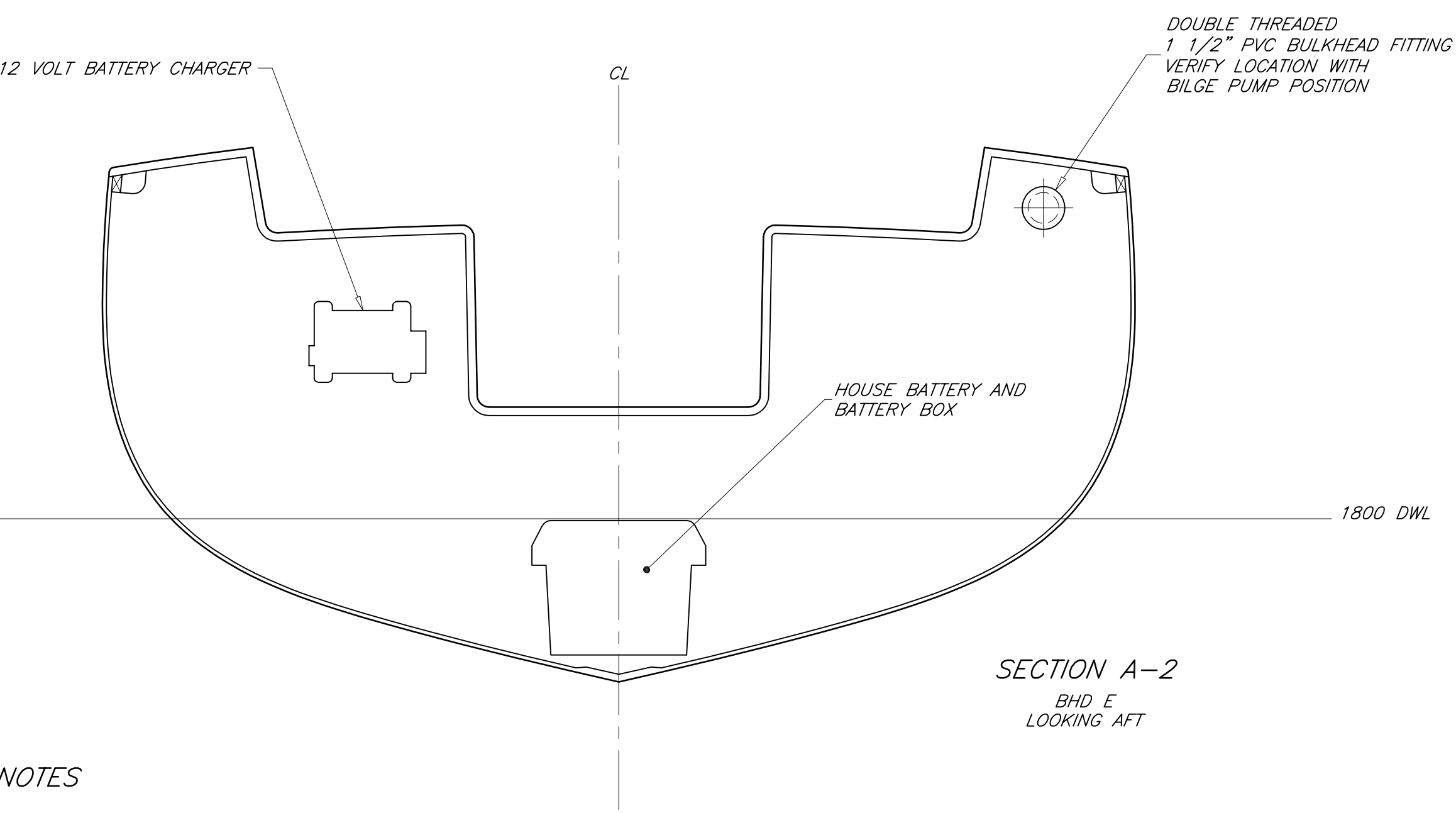
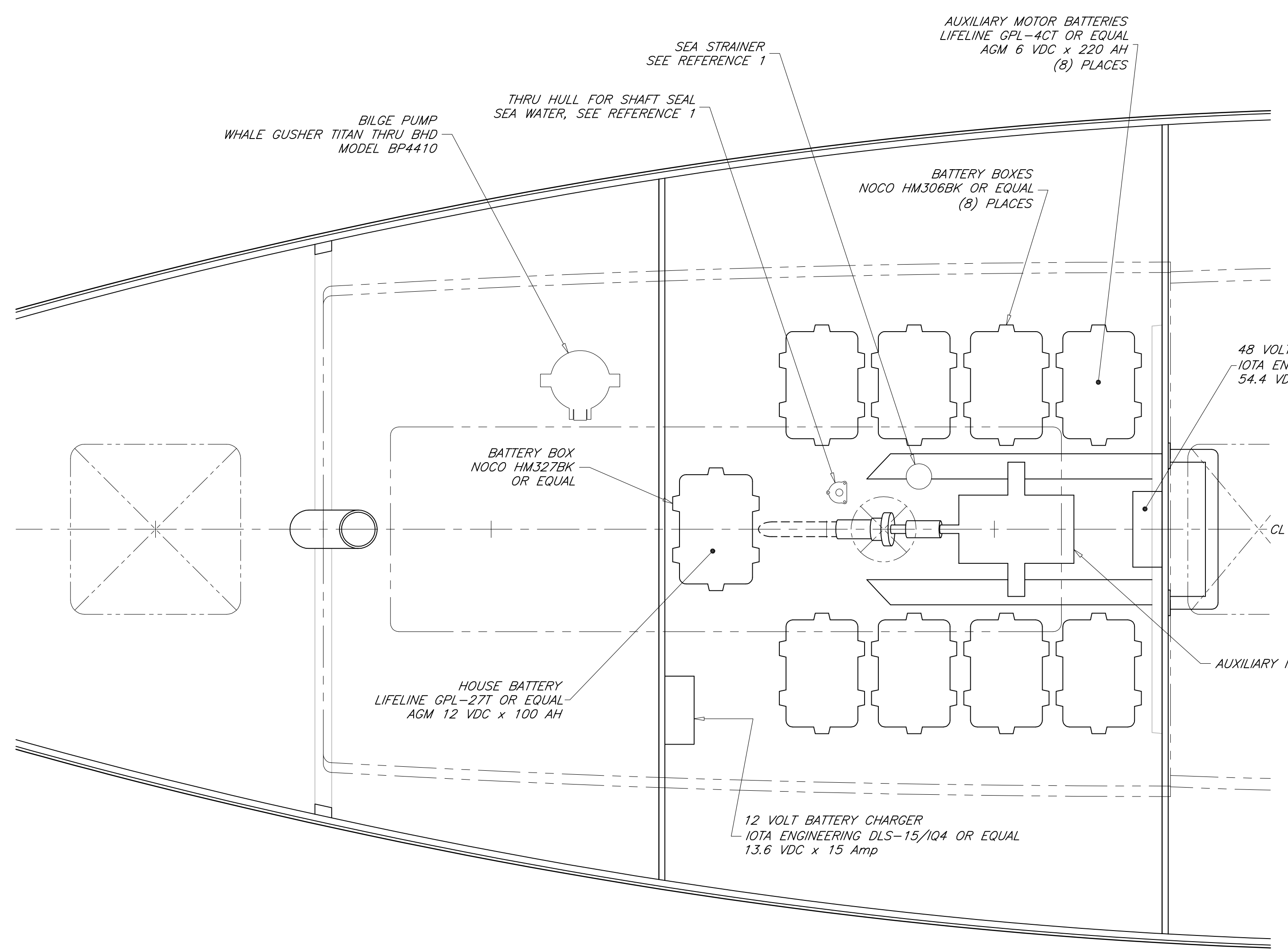


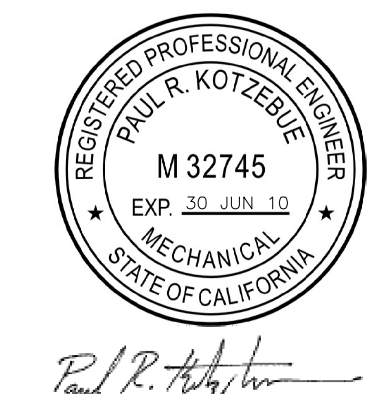
REVISIONS				
ZONE	REV	DESCRIPTION	DATE	APPROVED
ALL	-	ORIGINAL ISSUE	23 MAY 10	P. KOTZEBUE



- DRIVE LINE COMPONENTS**
- MOTOR IS ELECTRIC YACHT MODEL 130ib, 4.5 kW (6 hp) AT 3000 rpm. REDUCTION RATIO IS 2 : 1.
 - PROPELLER IS MARTEC ELLIPTICAL FOLDING OR EQUAL. DIAMETER = 13" (330 mm), PITCH = 13" (330 mm).
 - PROPELLER SHAFT IS 1" (25.4 mm) DIAMETER AQUAMET 22 OR AQUALOY 22. SHAFT TAPER IS SAE J755.
 - STRUT IS BUCK-ALGONQUIN MSSU1125B0 UNIVERSAL SAILBOAT STRUT.
 - STRUT AND STERN TUBE BEARINGS ARE 1 1/4" (31.8 mm) OD x 4" (101.6 mm) LONG CUTLASS BEARINGS.
 - STERN TUBE IS 1 3/4" (44.5 mm) OD x 1/8" (3.2 mm) WALL FRP TUBE.
 - SHAFT SEAL IS TIDES MARINE FSK-1000-1750-0 OR EQUAL.



- GENERAL NOTES**
- EQUIPMENT IS SHOWN IN GENERALIZED LOCATIONS. FINAL LOCATION TO BE DETERMINED AT SHIP.
 - MINIMUM PROPELLER TIP CLEARANCE IS 50 mm. VERIFY BEFORE STRUT INSTALLATION.
 - BUILDER TO PROVIDE FOUNDATIONS FOR ALL EQUIPMENT. ALL EQUIPMENT MUST BE SECURED TO PREVENT MOVEMENT WHILE UNDERWAY.



NO	TITLE	DWG NO
2	ELECTRICAL ONE LINE DIAGRAM	05-E3
1	PIPING SCHEMATIC	05-E2

REFERENCES	
STOCK PLANS	
12.9 METER SKERRY CRUISER	
MACHINERY ARRANGEMENT	

PAUL R. KOTZEBUE, PE
MECHANICAL ENGINEER
Encinitas, California USA

DRAFTER: PK	DATE: 23 MAY 10	SIZE: ARCH D	DWG NO: 05-E1	REV: -
CHECKER: PK	DATE: 23 MAY 10	SCALE: 1 : 10	SWBS: - -	SHEET: 1 OF 1

THIS DRAWING REMAINS THE PROPERTY OF PAUL R. KOTZEBUE, PE AND MAY NOT BE USED FOR ANY PURPOSE WITHOUT WRITTEN CONSENT.