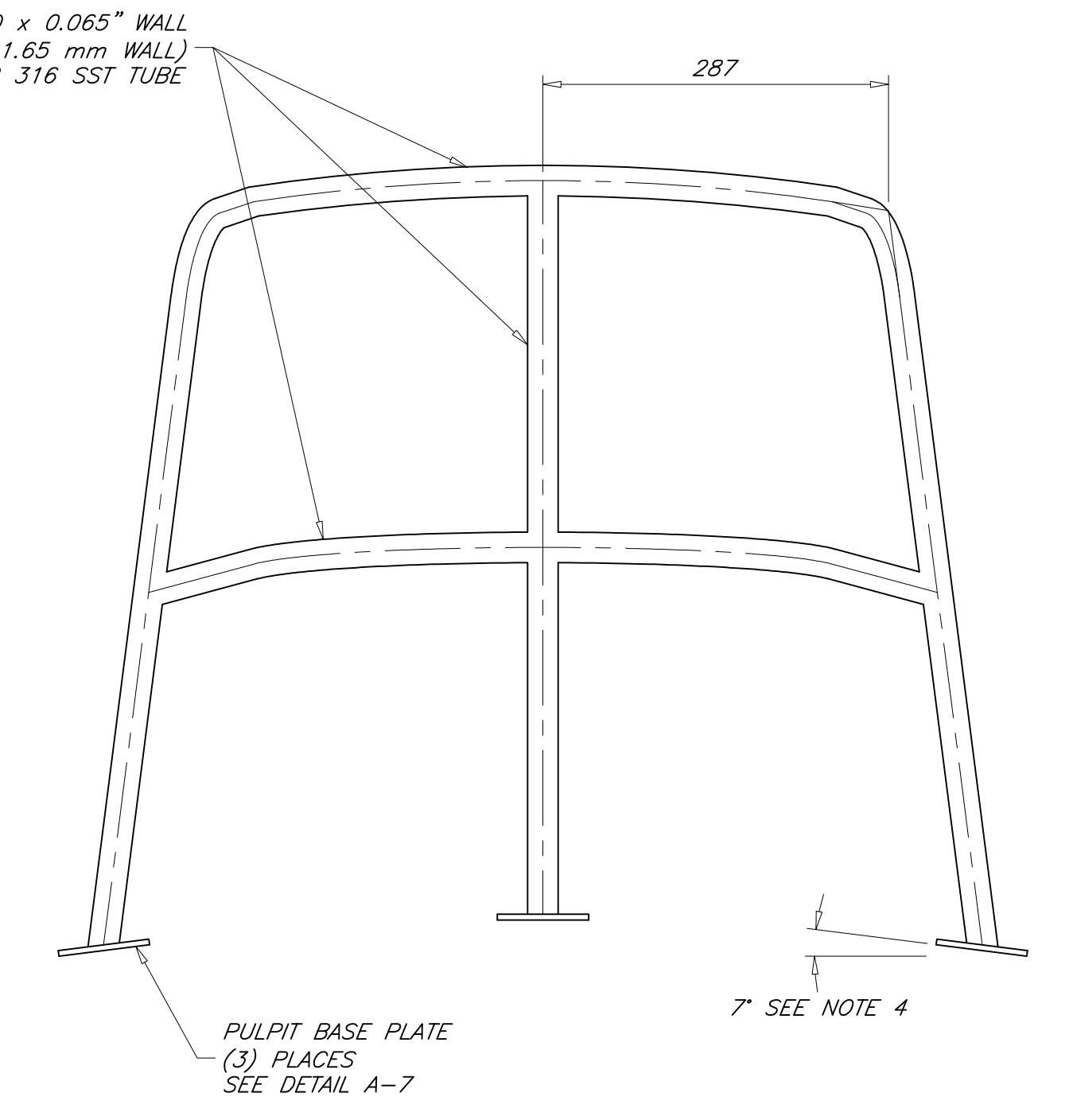
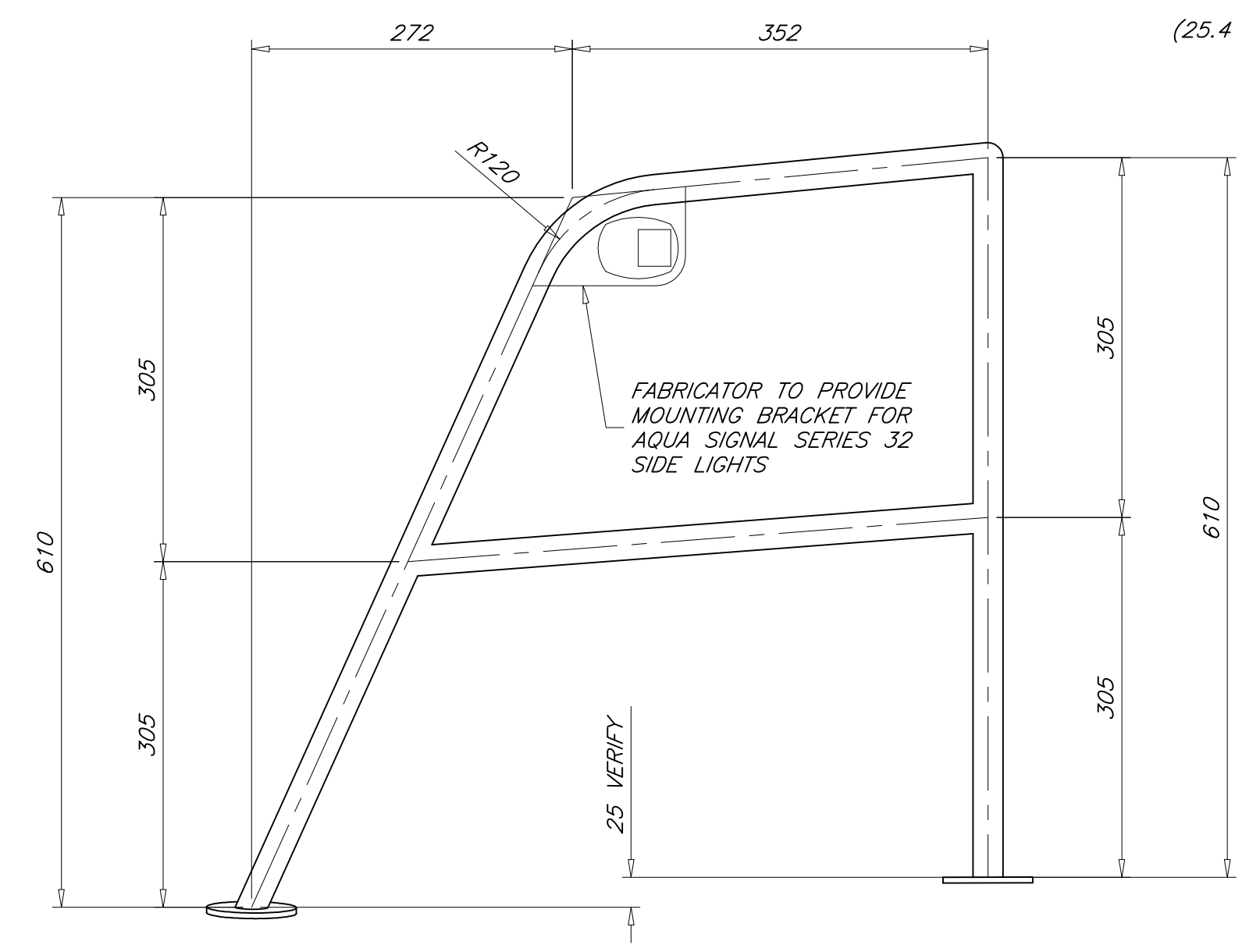
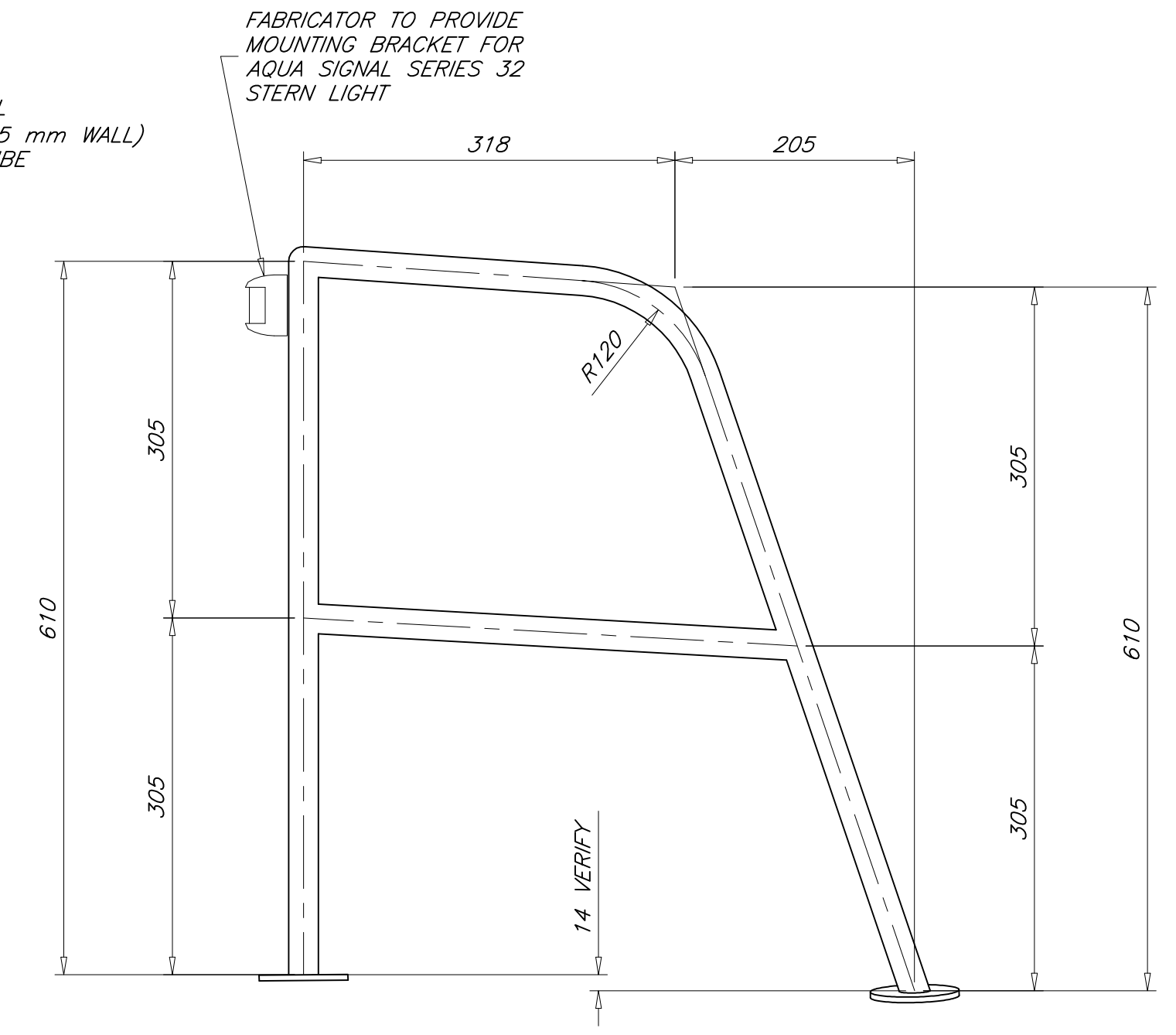
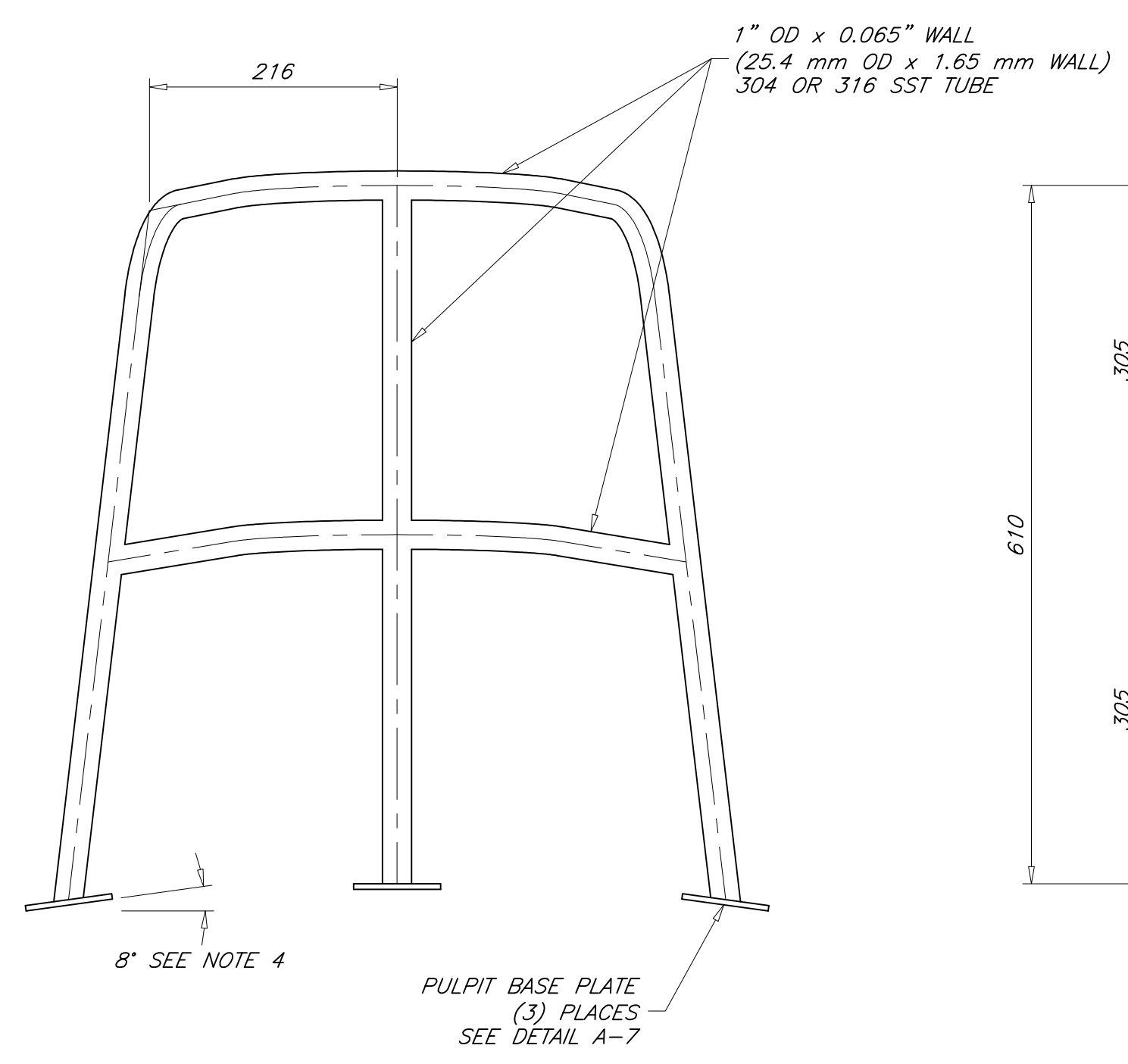
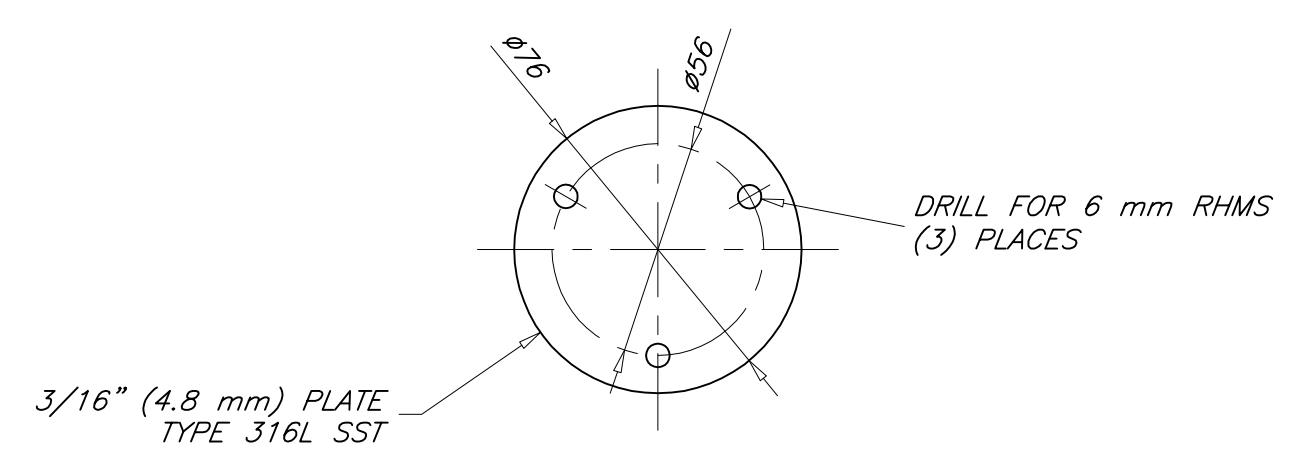
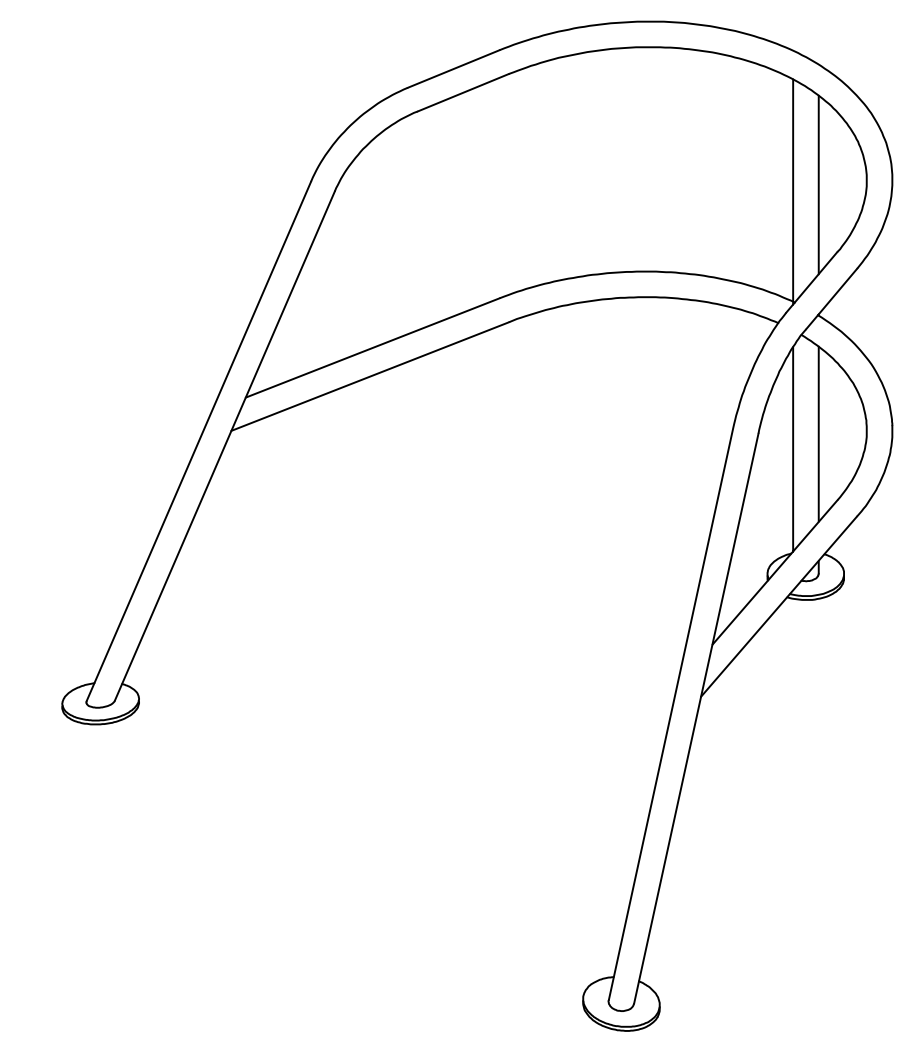
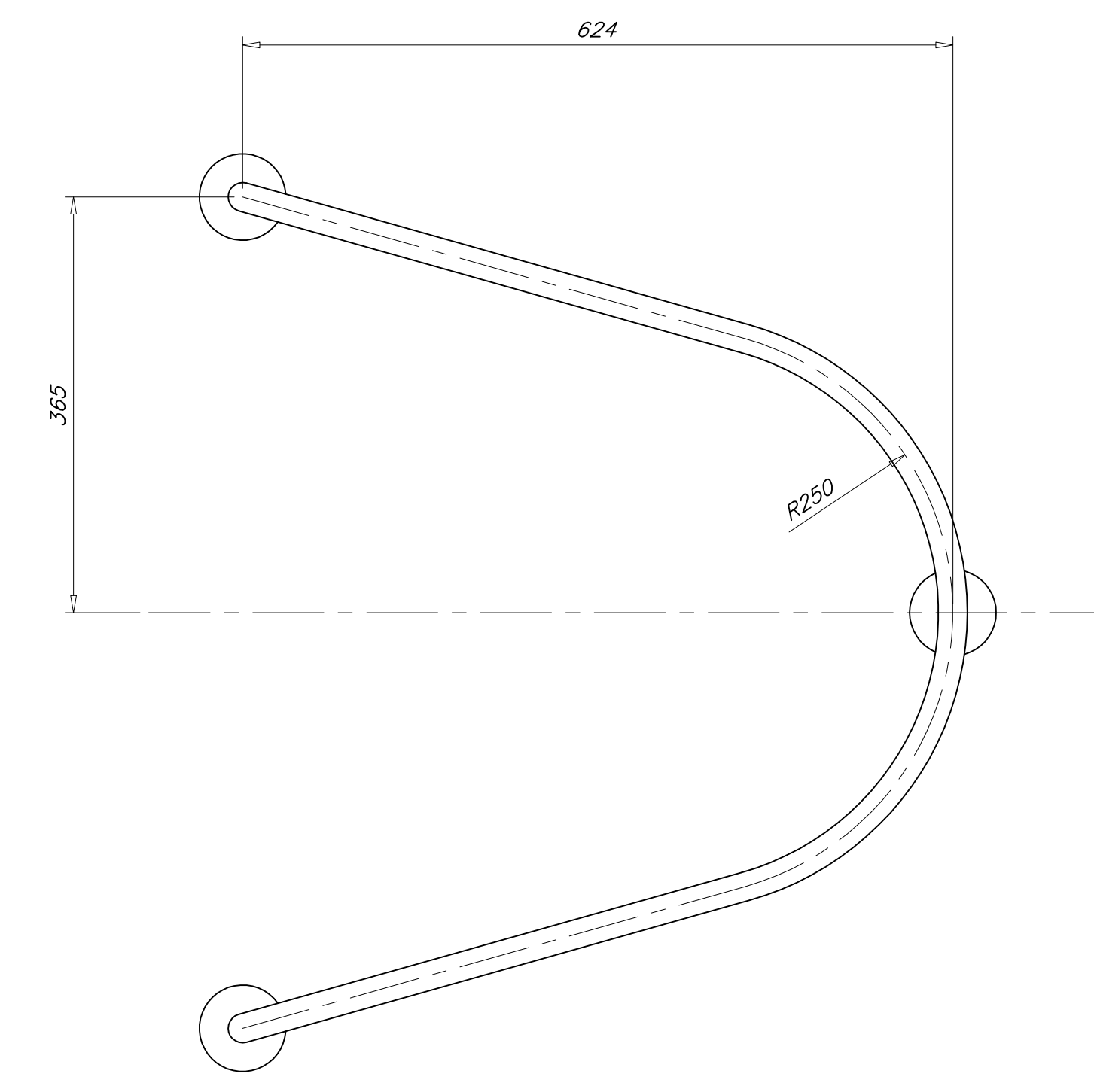
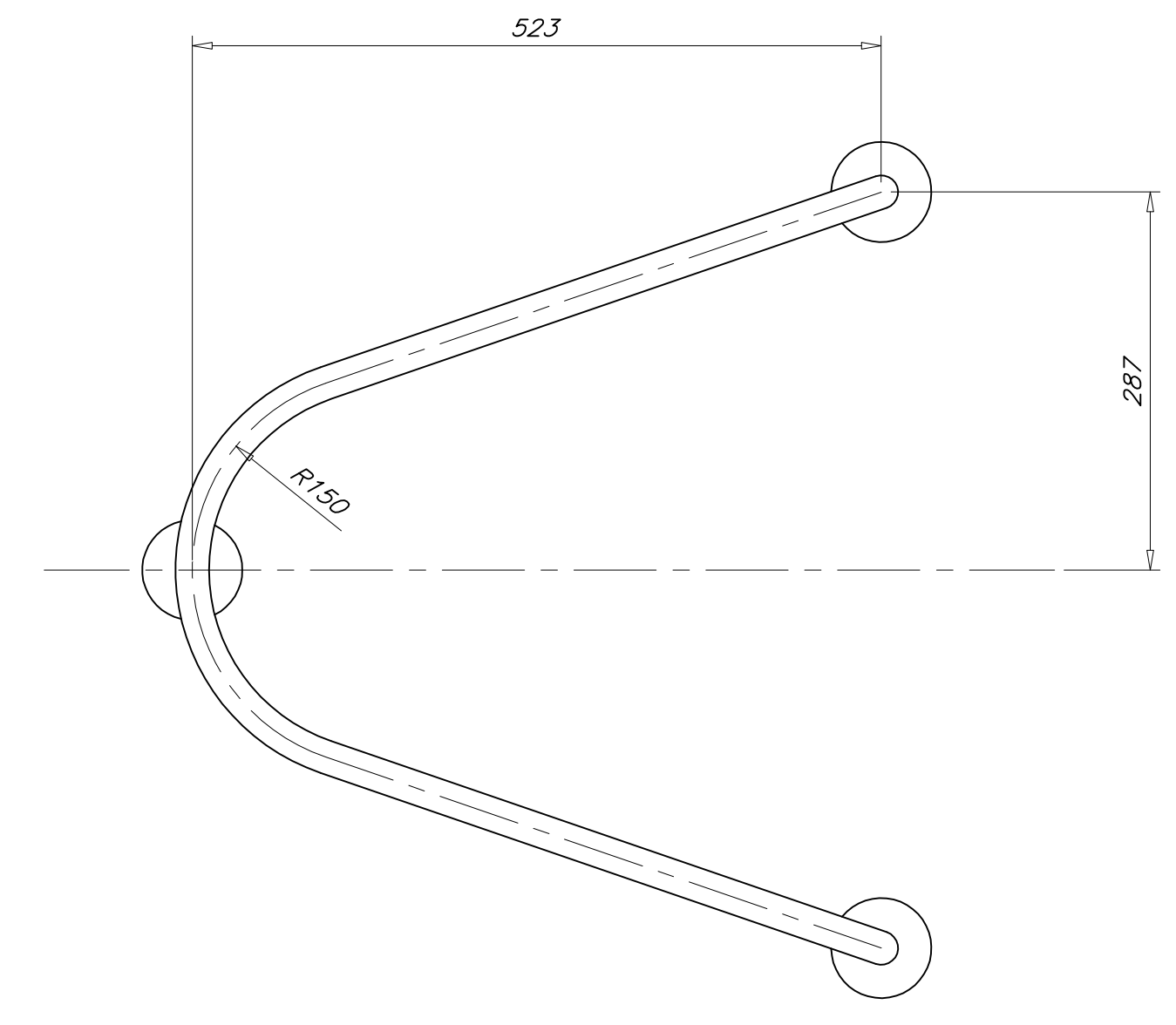
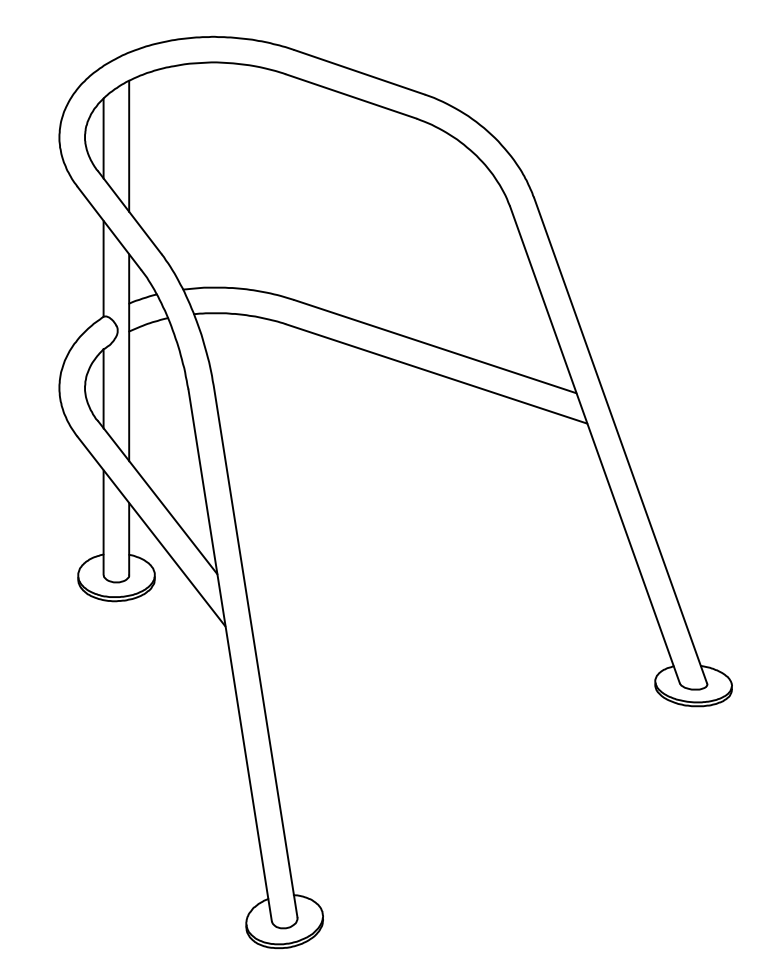


REVISIONS				
ZONE	REV	DESCRIPTION	DATE	APPROVED
ALL	-	ORIGINAL ISSUE	23 MAY 10	P. KOTZEBUE



DETAIL C-7  
STERN PULPIT

DETAIL C-2  
BOW PULPIT



DETAIL A-7  
PULPIT BASE PLATE  
SCALE = 1 : 2  
(6) REQUIRED PLUS (6) BACKING PLATES  
(12) TOTAL

GENERAL NOTES

1. WELDED PARTS TO BE JOINED BY CONTINUOUS FILLET WELDS. WELD PROCEDURE AND SIZE OF WELDS TO BE DETERMINED BY FABRICATOR.
2. MATERIAL IS TYPE 316L OR 304L STAINLESS STEEL. MINIMUM TENSILE STRENGTH = 415 MPa (60,000 psi) MINIMUM SHEAR STRENGTH = 275 MPa (40,000 psi) MINIMUM BEARING STRENGTH = 620 MPa (90,000 psi)
3. FASTENERS ARE TYPE 316 OR 304 STAINLESS STEEL.
4. BASE PLATE ANGLES ARE FOR REFERENCE ONLY. VERIFY ACTUAL BASE PLATE ANGLES AT SHIP.
5. FABRICATOR TO PROVIDE LIFELINE ATTACHMENTS ON BOW PULPIT AND STERN PULPIT FOR UPPER AND INTERMEDIATE LIFELINES.
6. SEE REFERENCE 1 FOR PULPIT LOCATIONS.



THIS DRAWING REMAINS THE PROPERTY OF PAUL R. KOTZEBUE, PE AND MAY NOT BE USED FOR ANY PURPOSE WITHOUT WRITTEN CONSENT.

1	DECK PLAN	05-B3
NO	TITLE	DWG NO
REFERENCES		
STOCK PLANS		
12.9 METER SKERRY CRUISER		
BOW AND STERN PULPITS		
DRAFTER: PK	DATE: 23 MAY 10	SIZE: ARCH D
CHECKER: PK	DATE: 23 MAY 10	SCALE: 1 : 5
DWG NO. 05-D3		REV: -
SHEET: 1 OF 1		