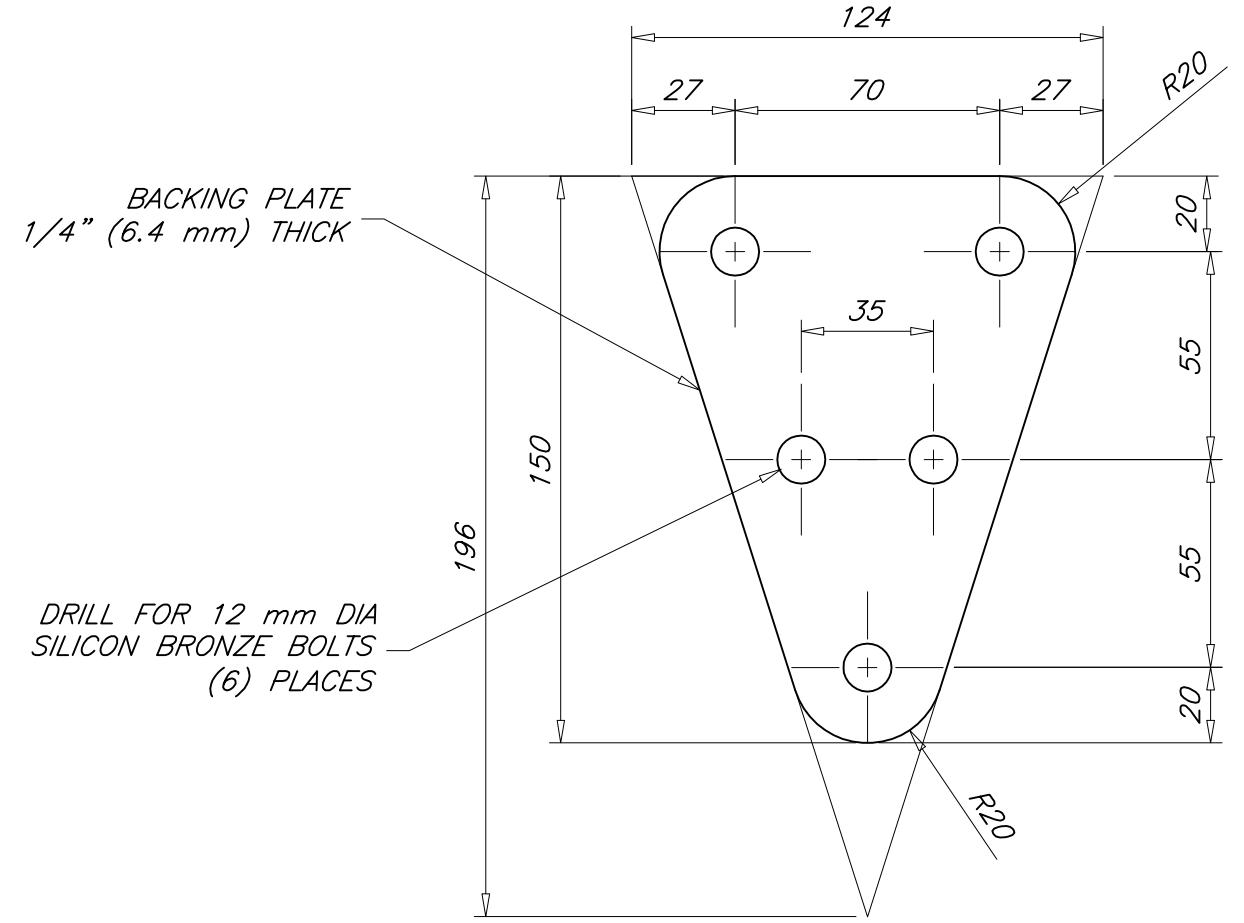
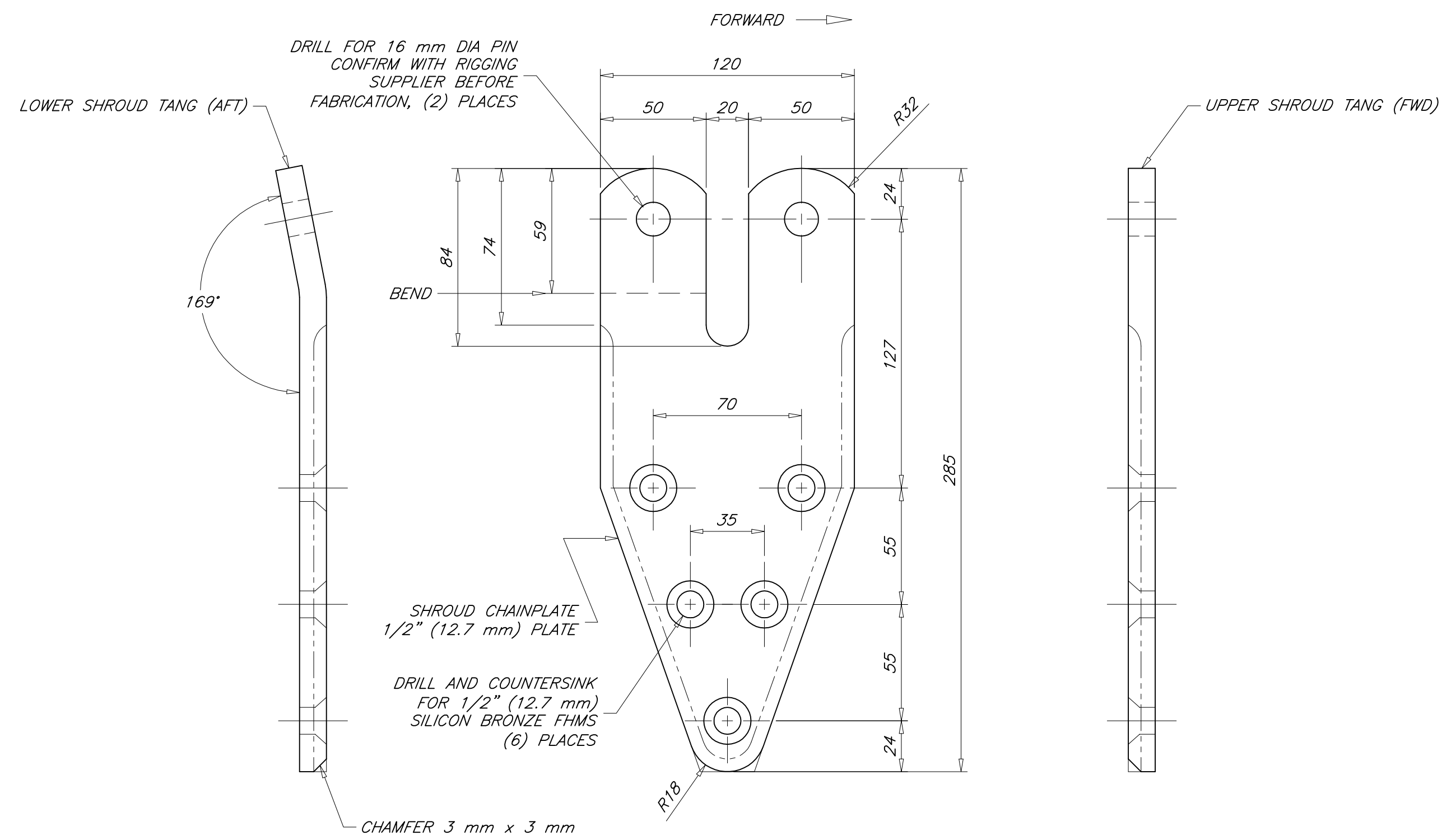
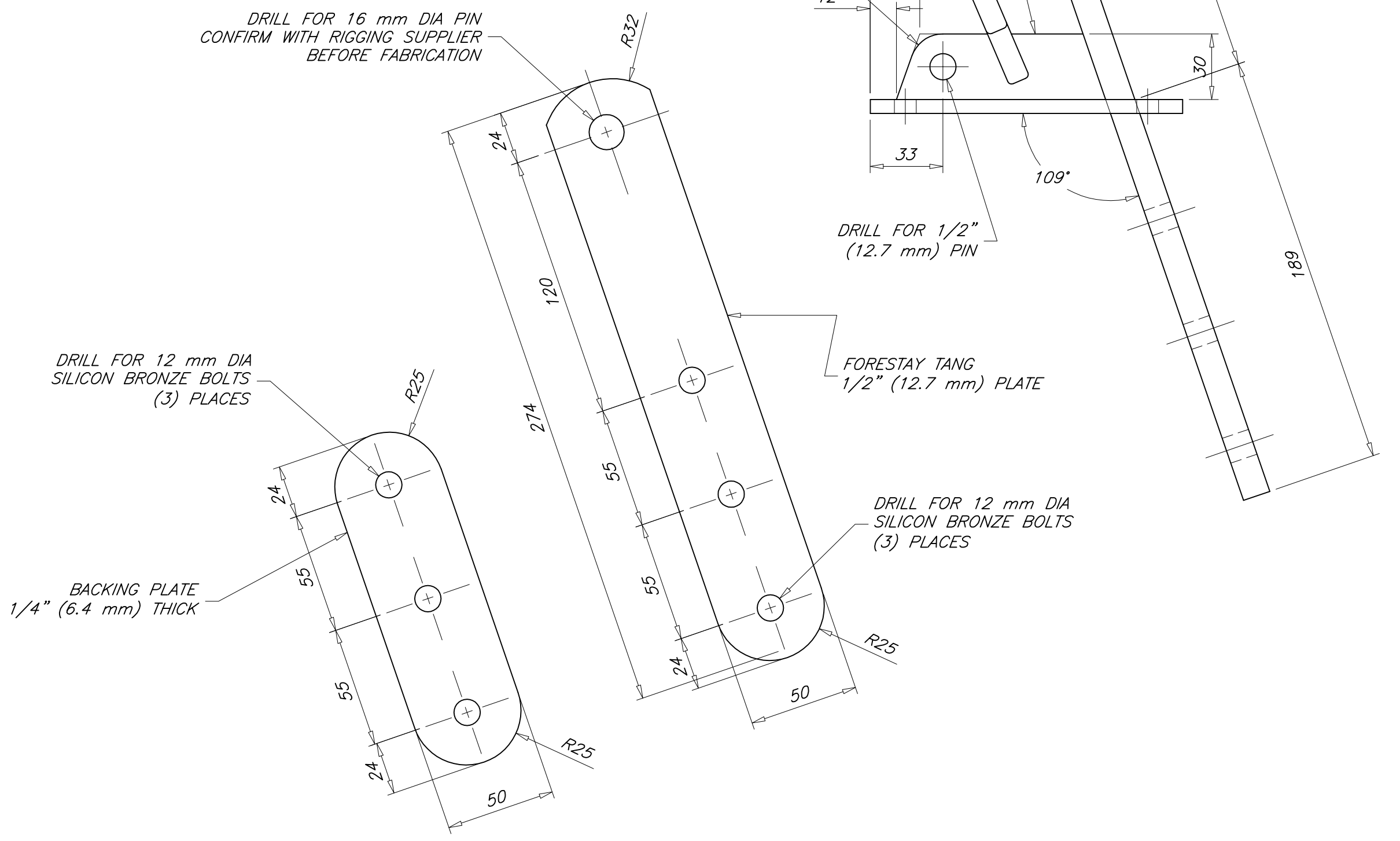
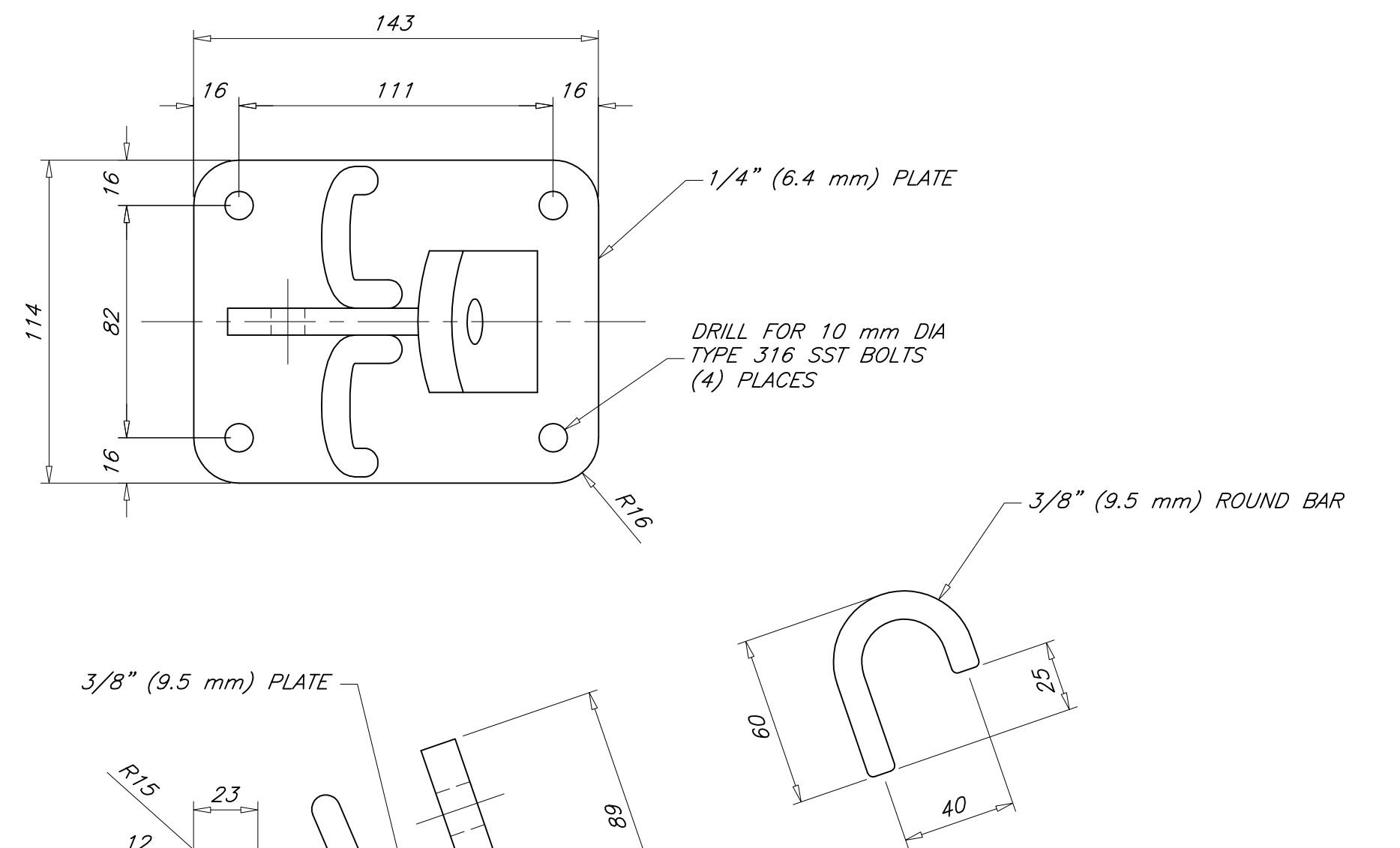


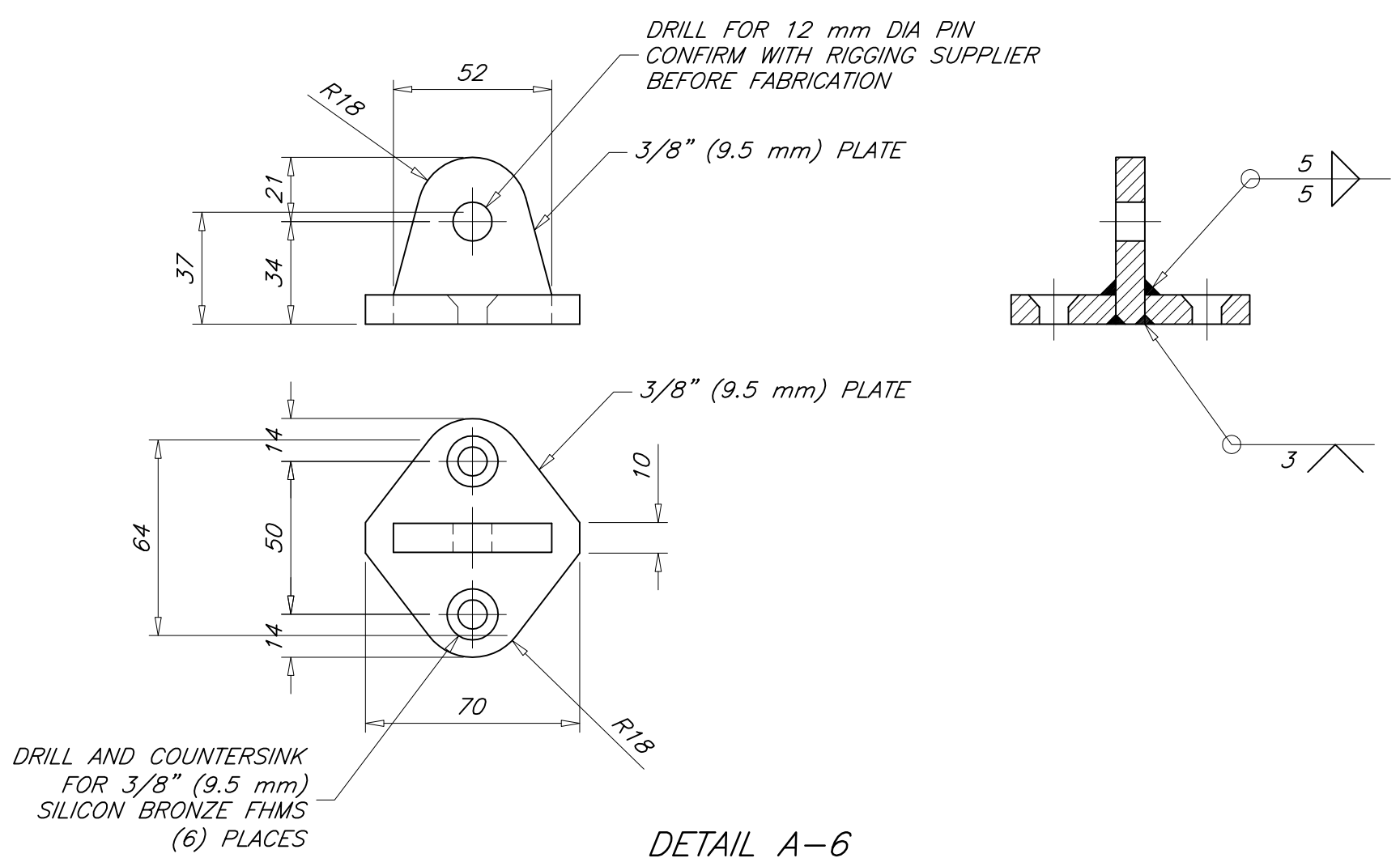
REVISIONS				
ZONE	REV	DESCRIPTION	DATE	APPROVED
ALL	-	ORIGINAL ISSUE	22 MAY 10	P. KOTZEBUE



DETAIL C-6
SHROUD CHAINPLATES
(2) REQUIRED
STBD SIDE SHOWN
PORT SIDE IS MIRROR IMAGE



DETAIL B-2
FORESTAY CHAINPLATE



DETAIL A-6
BACKSTAY CHAINPLATE

- GENERAL NOTES**
1. WELDED PARTS TO BE JOINED BY CONTINUOUS FILLET WELDS. WELD PROCEDURE AND SIZE OF WELDS TO BE DETERMINED BY FABRICATOR.
 2. VERIFY PIN SIZE WITH RIGGING. FABRICATOR TO DETERMINE HOLE DIAMETER FOR PINS. PINS MUST SLIDE EASILY INTO HOLES. CHAMFER ALL HARD CORNERS 0.5 mm.
 3. MATERIAL IS SILICON BRONZE. MINIMUM TENSILE STRENGTH = 386 MPa (55,000 psi) MINIMUM SHEAR STRENGTH = 275 MPa (40,000 psi)
 4. FASTENERS ARE SILICON BRONZE. DO NOT USE STAINLESS STEEL FASTENERS. CONFIRM AVAILABILITY OF FASTENERS BEFORE FABRICATION.
 5. DRILL AND TAP BRONZE TAPPING PLATE FOR BACKSTAY CHAINPLATE. SEE REFERENCE 1 FOR TAPPING PLATE LOCATION.
 6. SEE REFERENCE 1 FOR CHAINPLATE LOCATIONS.



1	DECK PLAN	05-B3		
NO	TITLE	DWG NO		
REFERENCES				
STOCK PLANS				
12.9 METER SKERRY CRUISER				
CHAINPLATES				
DRAFTER	DATE	SIZE	DWG NO.	REV.
PK	22 MAY 10	ARCH D	05-D2	-
CHECKER	DATE	SCALE	SWBS	SHEET
PK	22 MAY 10	1 : 2	--	1 OF 1

THIS DRAWING REMAINS THE PROPERTY OF PAUL R. KOTZEBUE, PE AND MAY NOT BE USED FOR ANY PURPOSE WITHOUT WRITTEN CONSENT.