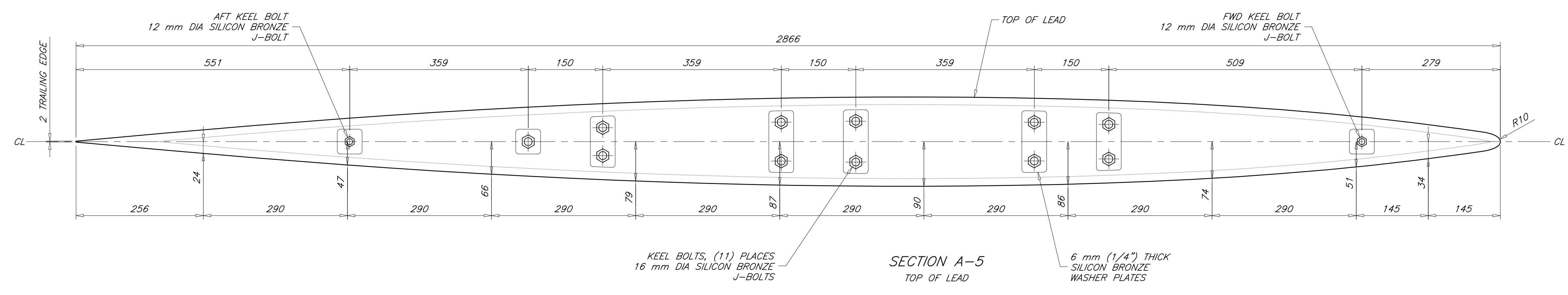
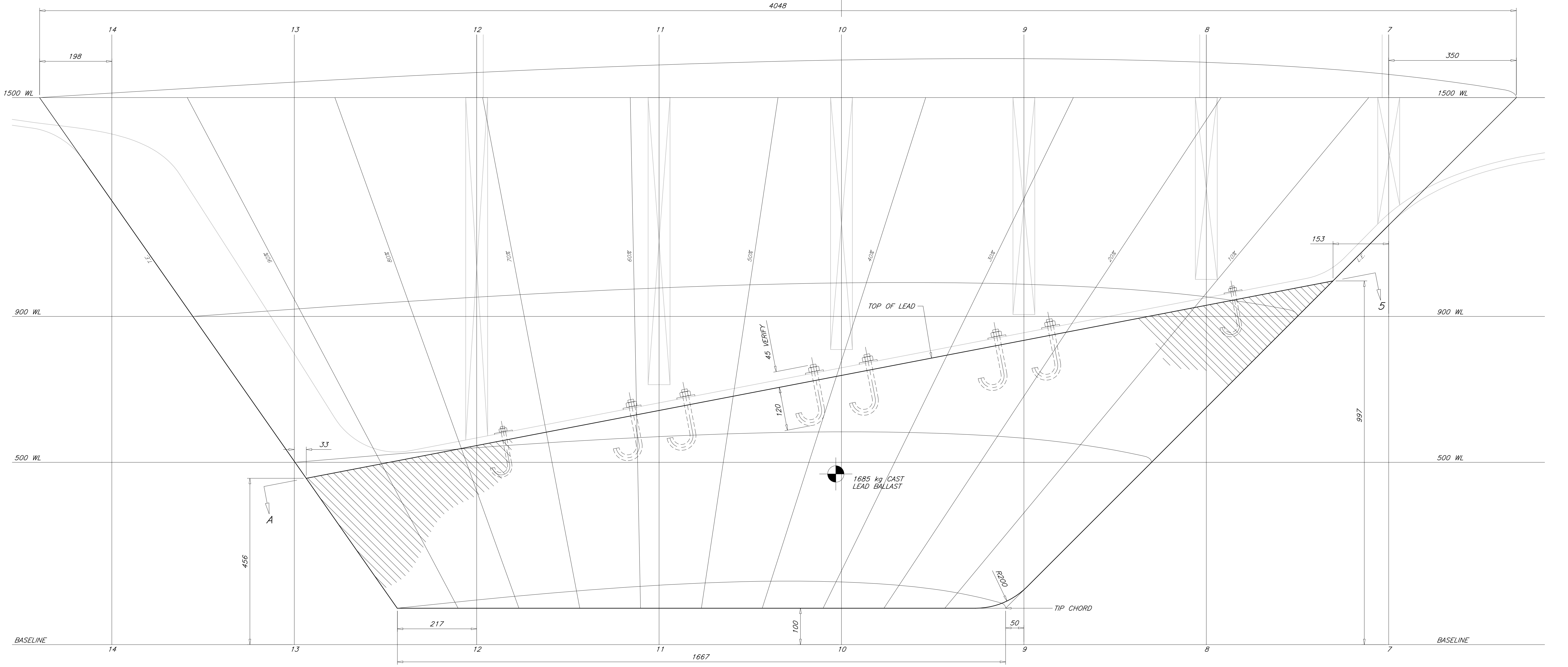
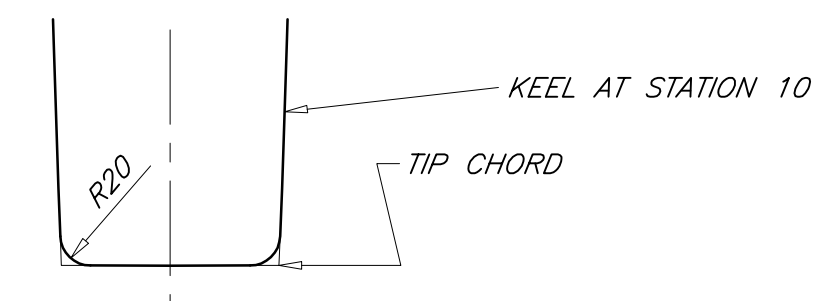


REVISIONS				
ZONE	REV	DESCRIPTION	DATE	APPROVED
ALL	-	ORIGINAL ISSUE	13 MAY 10	P. KOTZEBUE

**SECTION D-3**  
KEEL TIP RADIUS  
SCALE = 1 : 2



**GENERAL NOTES**

1. KEEL BOLTS ARE CAST IN TO LEAD KEEL. USE ANTI-SEIZE COMPOUND FOR NUTS. KEEL BOLT NUT TORQUE IS 339 N\*m (250 ft\*lb).
2. LEAD CASTING IS TO CONTAIN 2% TO 4% ANTIMONY. DENSITY IS 11,080 kg/m<sup>3</sup> (692 lb/ft<sup>3</sup>).
3. BED KEEL TO DEADWOOD WITH 3M 4200 OR EQUAL MARINE SEALANT.
4. SEE REFERENCE 1 FOR KEEL OFFSETS.



*Paul R. Kotzebue*

1		TABLE OF OFFSETS		05-A5	
NO		TITLE		DWG NO	
REFERENCES					
STOCK PLANS					
12.9 METER SKERRY CRUISER					
KEEL DETAILS					
PAUL R. KOTZEBUE, PE MECHANICAL ENGINEER Encinitas, California USA					
DRAFTER	PK	DATE	13 MAY 10	SIZE	ARCH D
CHECKER	PK	DATE	13 MAY 10	SCALE	1 : 5
				DWG NO.	05-A3
				SWBS	--
				SHEET	1 OF 1

THIS DRAWING REMAINS THE PROPERTY OF PAUL R. KOTZEBUE, PE AND MAY NOT BE USED FOR ANY PURPOSE WITHOUT WRITTEN CONSENT.