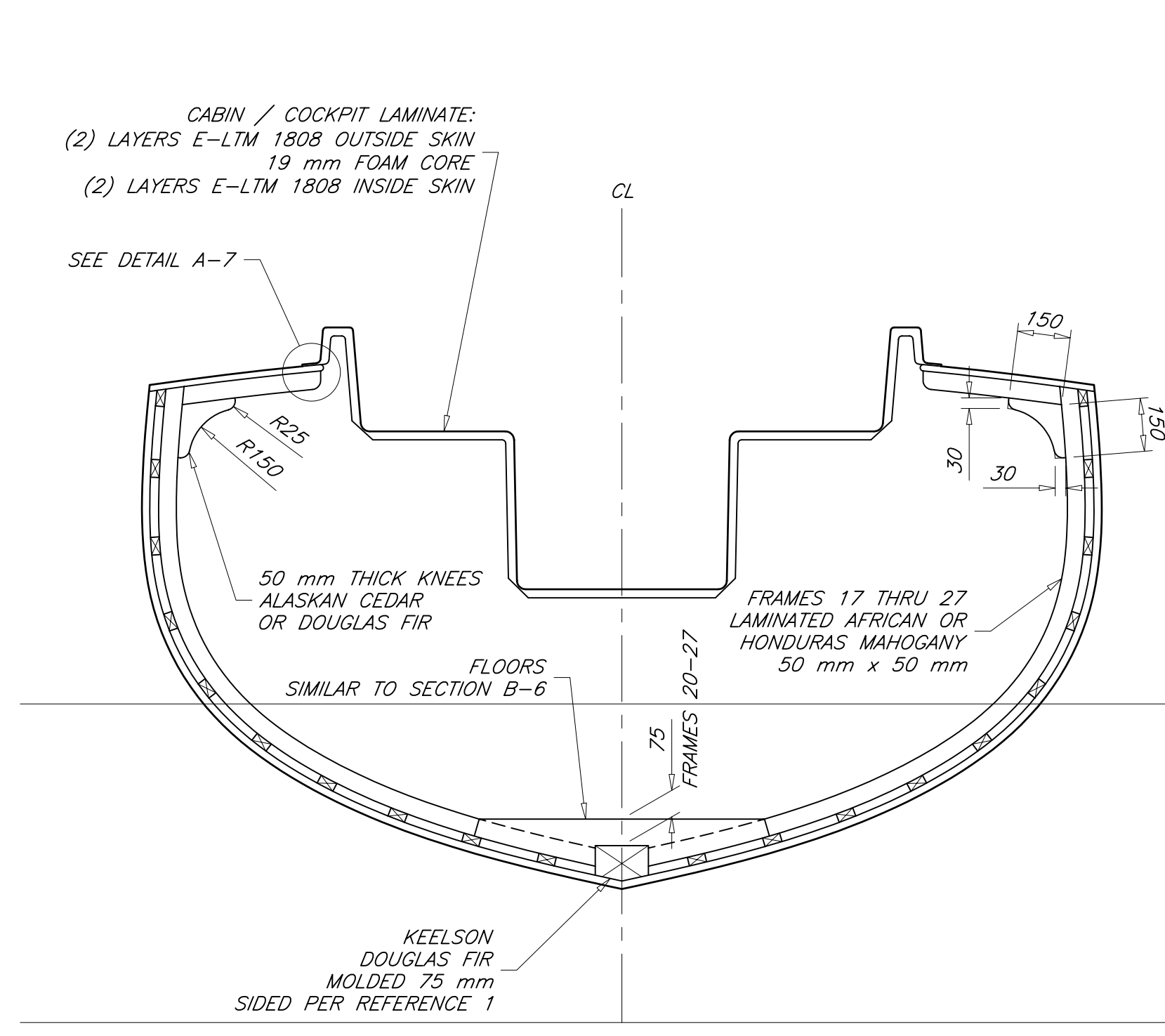
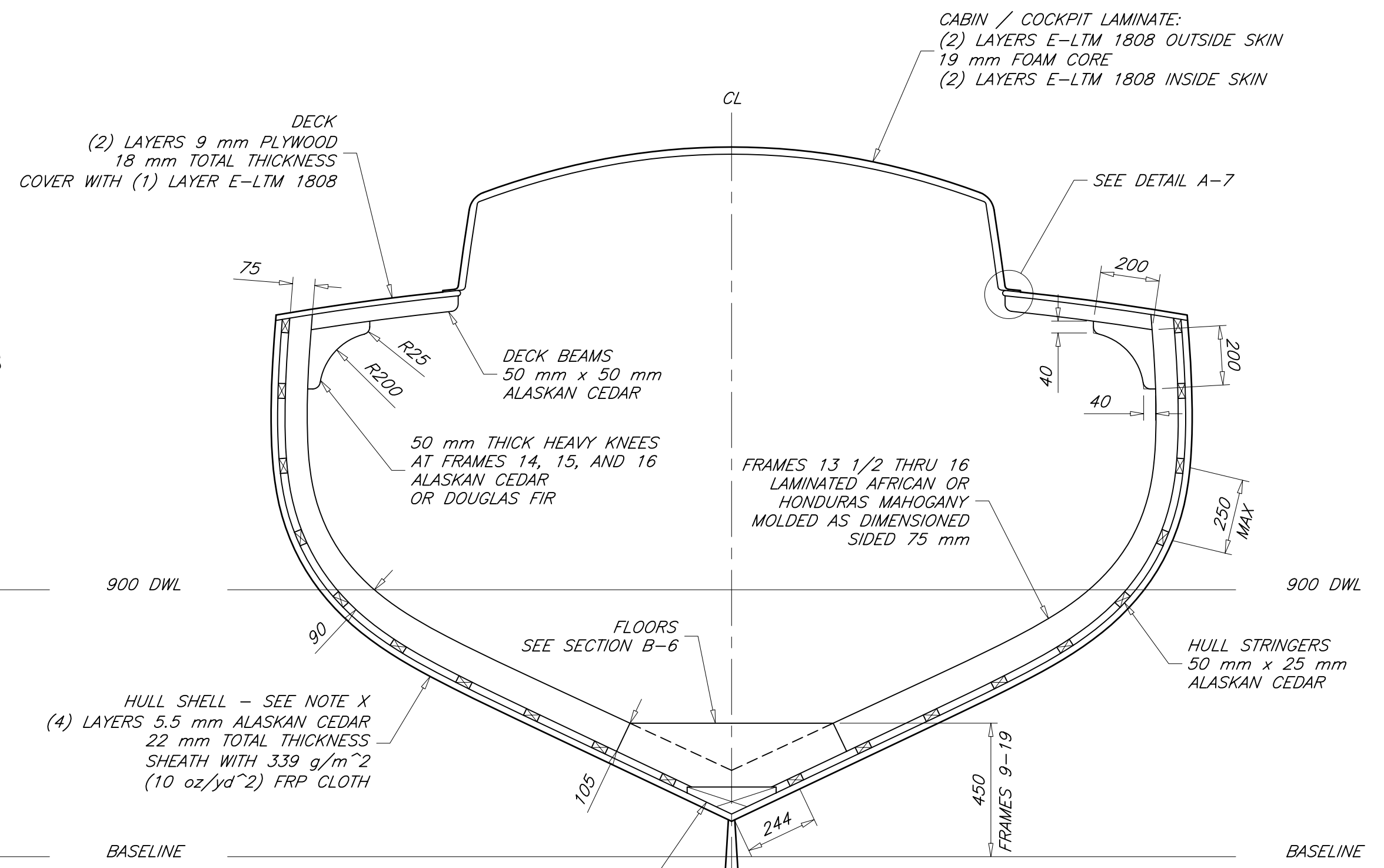


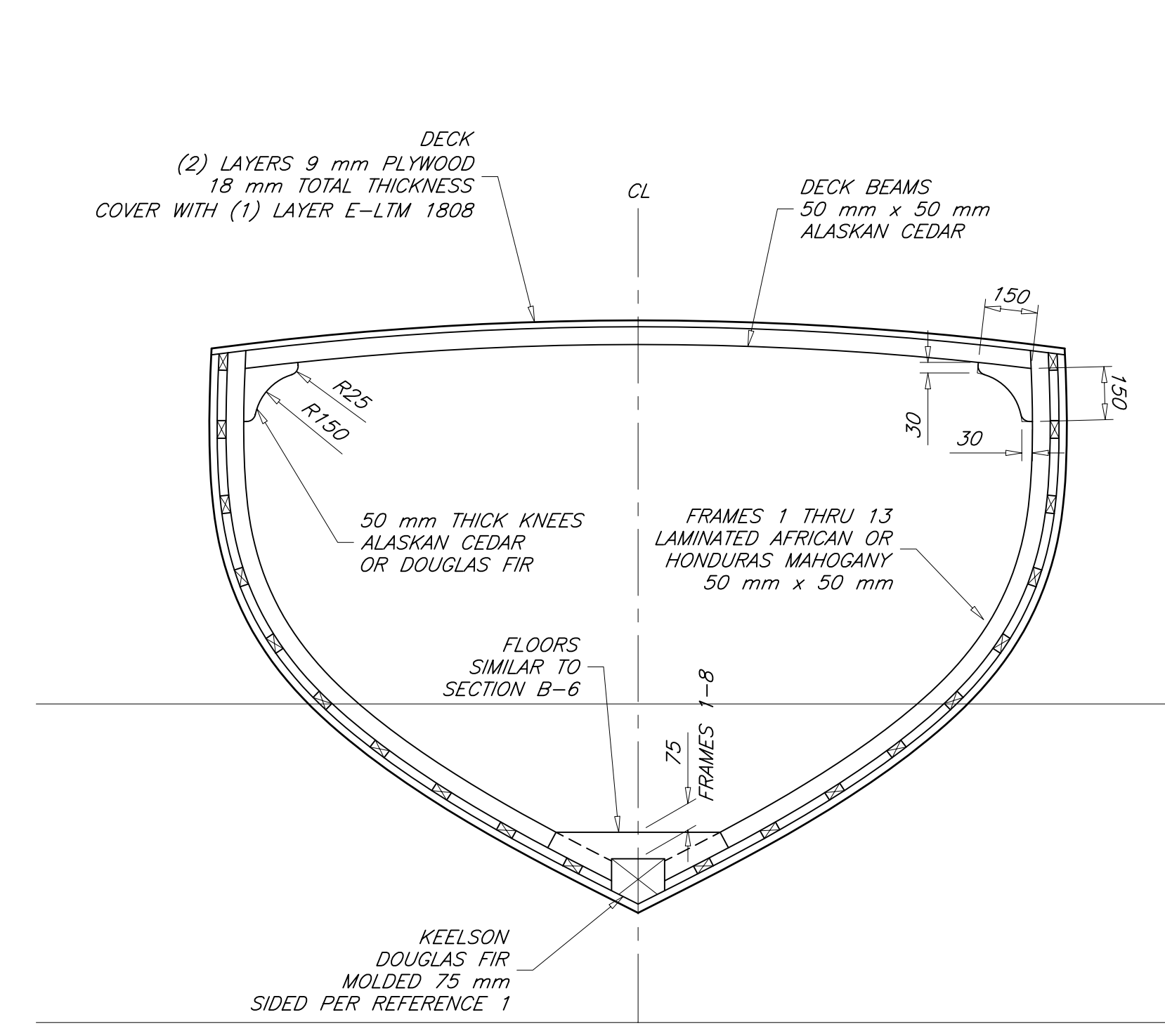
REVISIONS				
ZONE	REV	DESCRIPTION	DATE	APPROVED
ALL	-	ORIGINAL ISSUE	10 OCT 09	P. KOTZEBUE



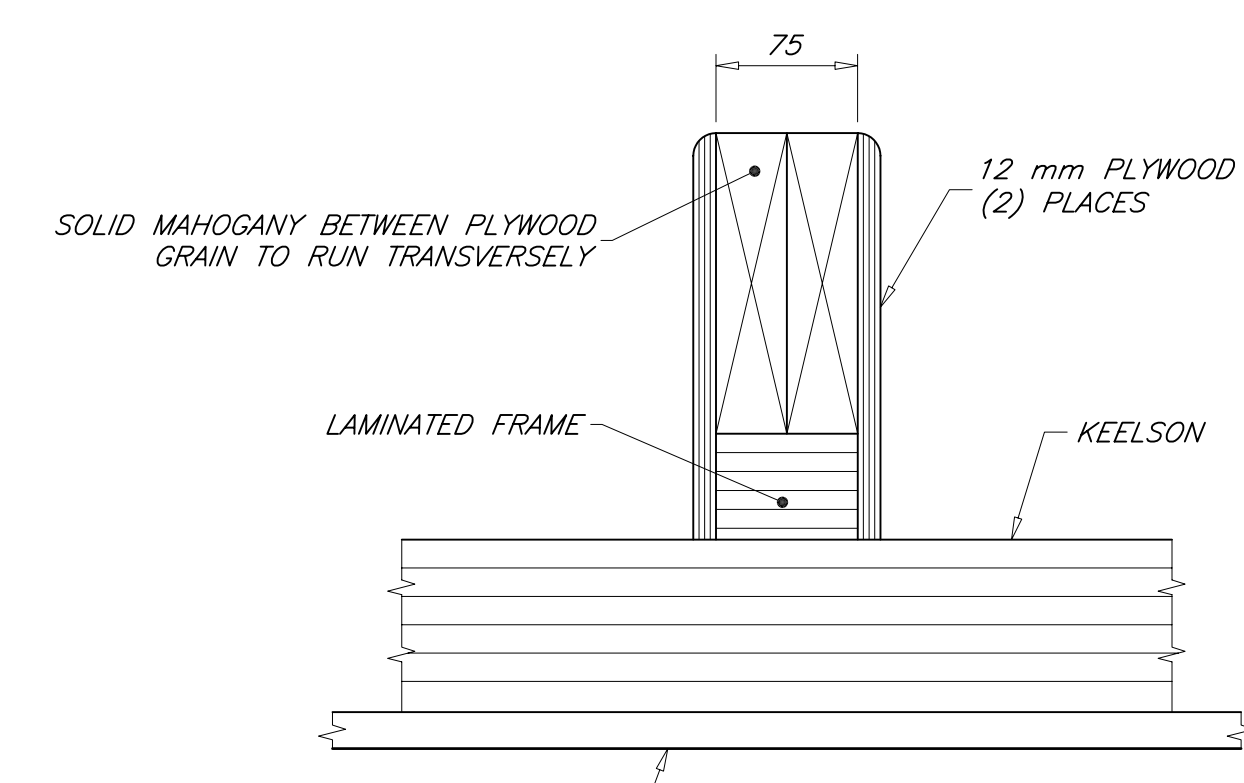
SECTION AT FRAME 21  
LOOKING FWD



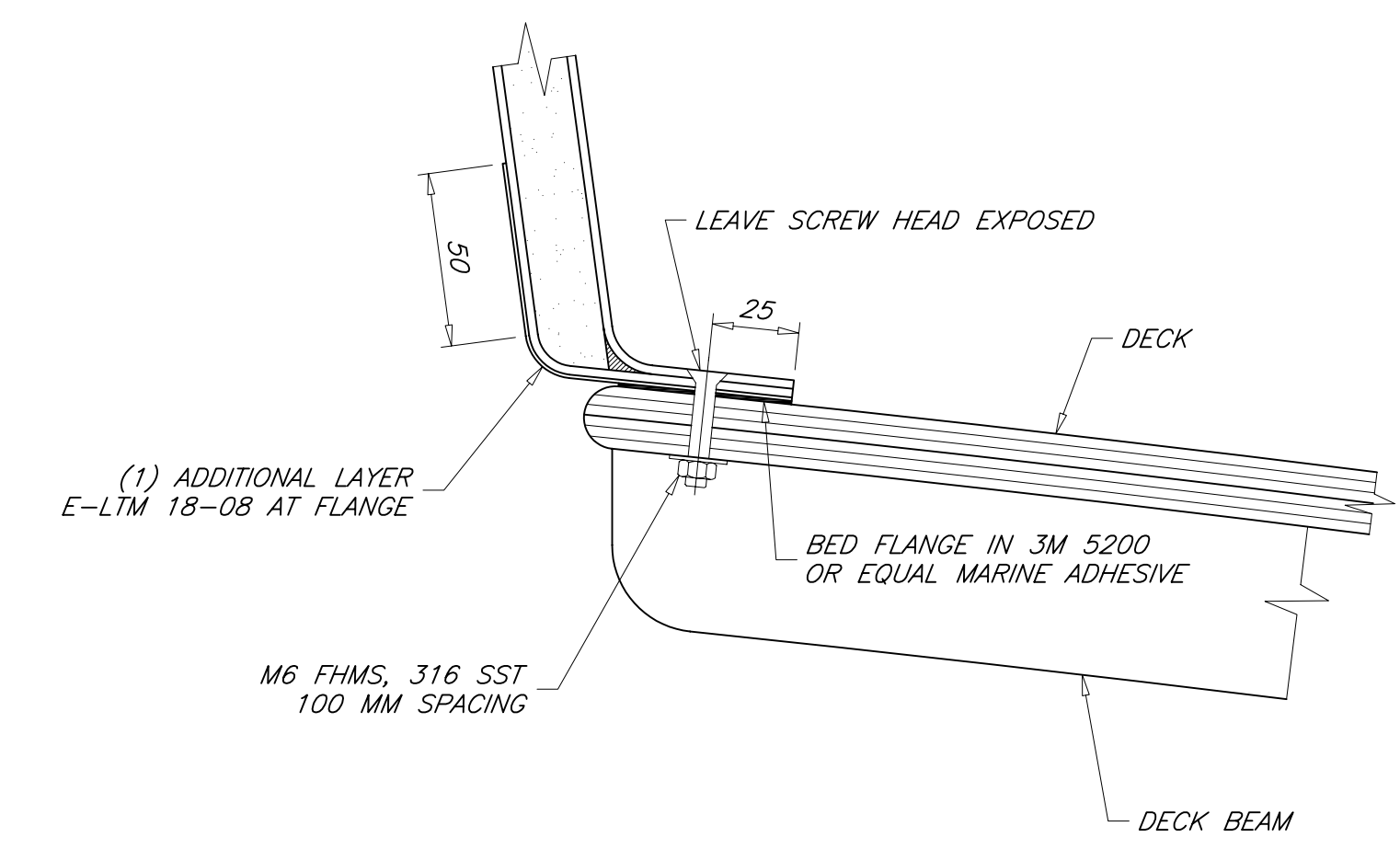
SECTION AT FRAME 16  
LOOKING FWD



SECTION AT FRAME 8  
LOOKING FWD



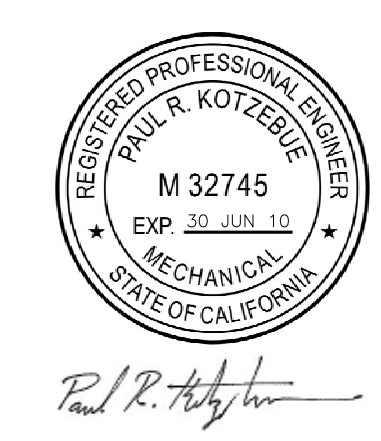
SECTION B-6  
SECTION THRU FLOOR  
SCALE = 1 : 4



DETAIL A-7  
CABIN / COCKPIT FLANGE TO DECK JOINT  
SCALE = 1 : 2

GENERAL NOTES

- HULL AND DECK ARE CONSTRUCTED USING THE WOOD EPOXY SATURATION TECHNIQUE (W.E.S.T.) SYSTEM. ACCEPTABLE EPOXY RESINS ARE WEST SYSTEM, SYSTEM THREE, OR EQUIVALENT.
- PLYWOOD IS OKUME MARINE GRADE PLYWOOD MEETING BRITISH STANDARD SPECIFICATION FOR MARINE PLYWOOD BS 1088.  
MINIMUM MODULUS OF RUPTURE = 40 MPa (5,800 psi)  
MINIMUM MODULUS OF ELASTICITY = 4,500 MPa (652,500 psi)
- HULL TOPSIDES AND BOTTOM PLANKING TO HAVE GRAIN ORIENTED AT ABOUT 45 DEGREES TO THE LONGITUDINAL AXIS OF THE HULL WITH ADJACENT LAYERS PERPENDICULAR TO EACH OTHER.
- DECK PLANKING TO HAVE PLYWOOD FACE GRAIN PARALLEL TO THE LONGITUDINAL AXIS OF THE HULL.
- DOUGLAS FIR MAY BE USED IN LIEU OF ALASKAN CEDAR FOR LONGITUDINAL MEMBERS.
- E-LTM 1808 IS VECTOR PLY E-LTM 1808 E GLASS BIAXIAL WITH MAT FABRIC.  
MIN TENSILE STRENGTH OF CURED LAMINATE = 228 MPa (33,000 psi)  
MIN FLEXURAL STRENGTH OF CURED LAMINATE = 338 MPa (49,000 psi)  
THICKNESS = 1.17 mm (0.046") PER PLY
- HULL SURFACE AREA = 68.1 m<sup>2</sup> (733 ft<sup>2</sup>)  
DECK SURFACE AREA = 27.4 m<sup>2</sup> (295 ft<sup>2</sup>)  
CABIN/COCKPIT AREA = 16.6 m<sup>2</sup> (179 ft<sup>2</sup>)



PAUL R. KOTZEBUE, PE  
MECHANICAL ENGINEER  
Encinitas, California USA

2	KEEL AND RUDDER DETAILS	04-A4
1	FRAMING PLAN	04-C1
NO	TITLE	DWG NO
REFERENCES		
STOCK PLANS		
18.2 METER SKERRY CRUISER		
CONSTRUCTION SECTIONS		
DRAFTER:	PK	DATE: 10 OCT 09
CHECKER:	PK	DATE: 10 OCT 09
SIZE:	ARCH D	DWG NO. 04-C2
SCALE:	1 : 15	SWBS: --
REV:	-	SHEET: 1 OF 1

THIS DRAWING REMAINS THE PROPERTY OF PAUL R. KOTZEBUE, PE AND MAY NOT BE USED FOR ANY PURPOSE WITHOUT WRITTEN CONSENT.