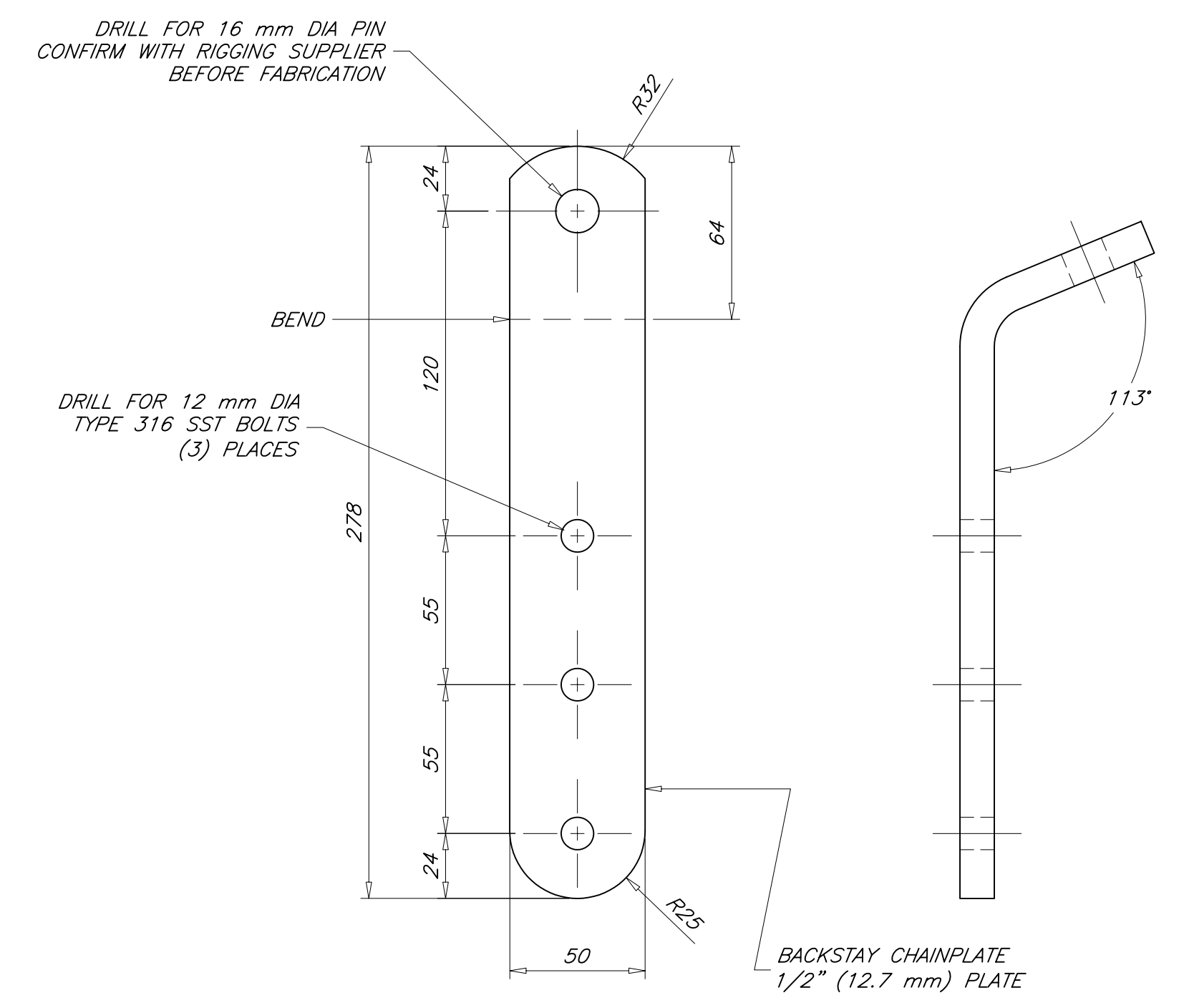
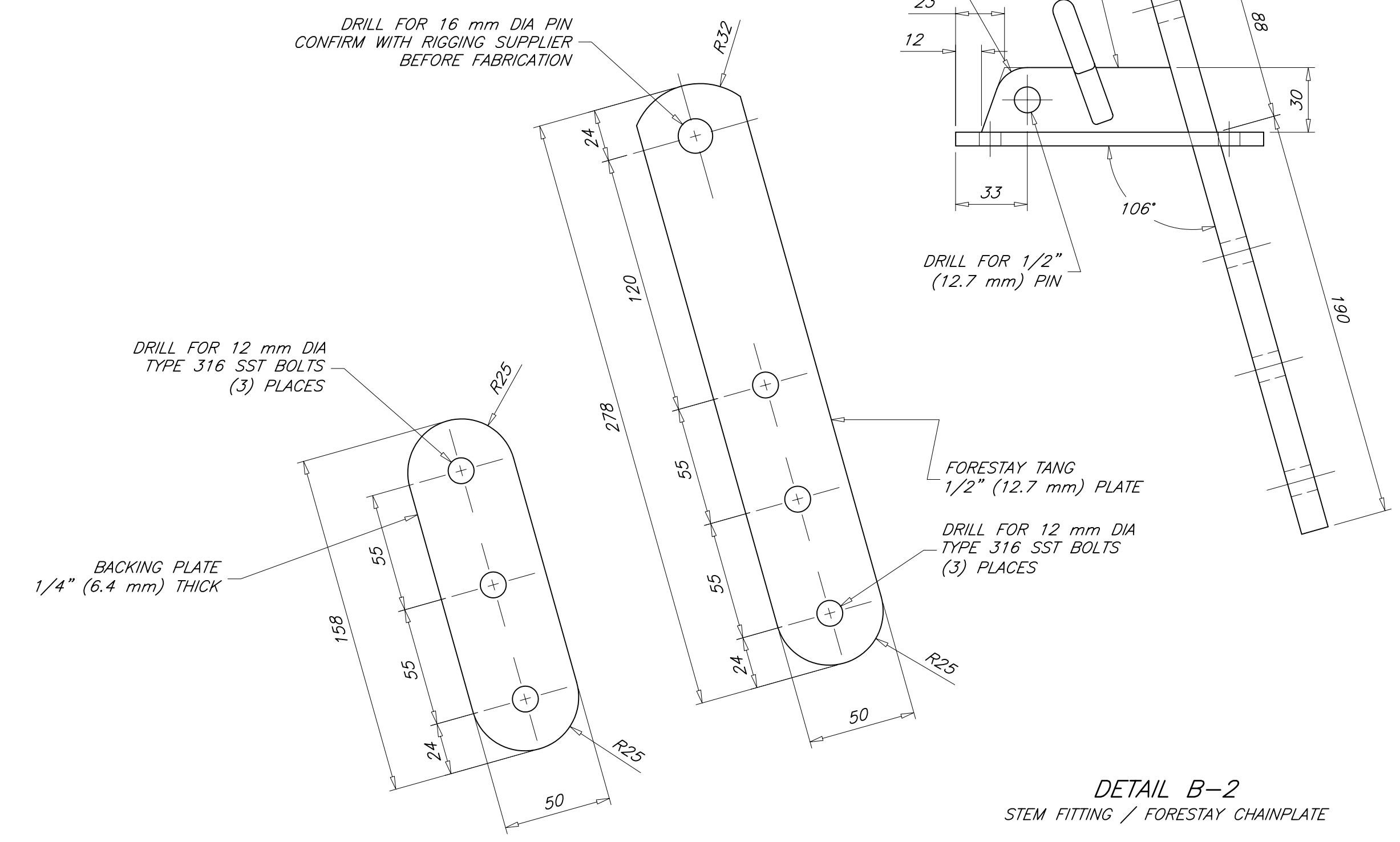
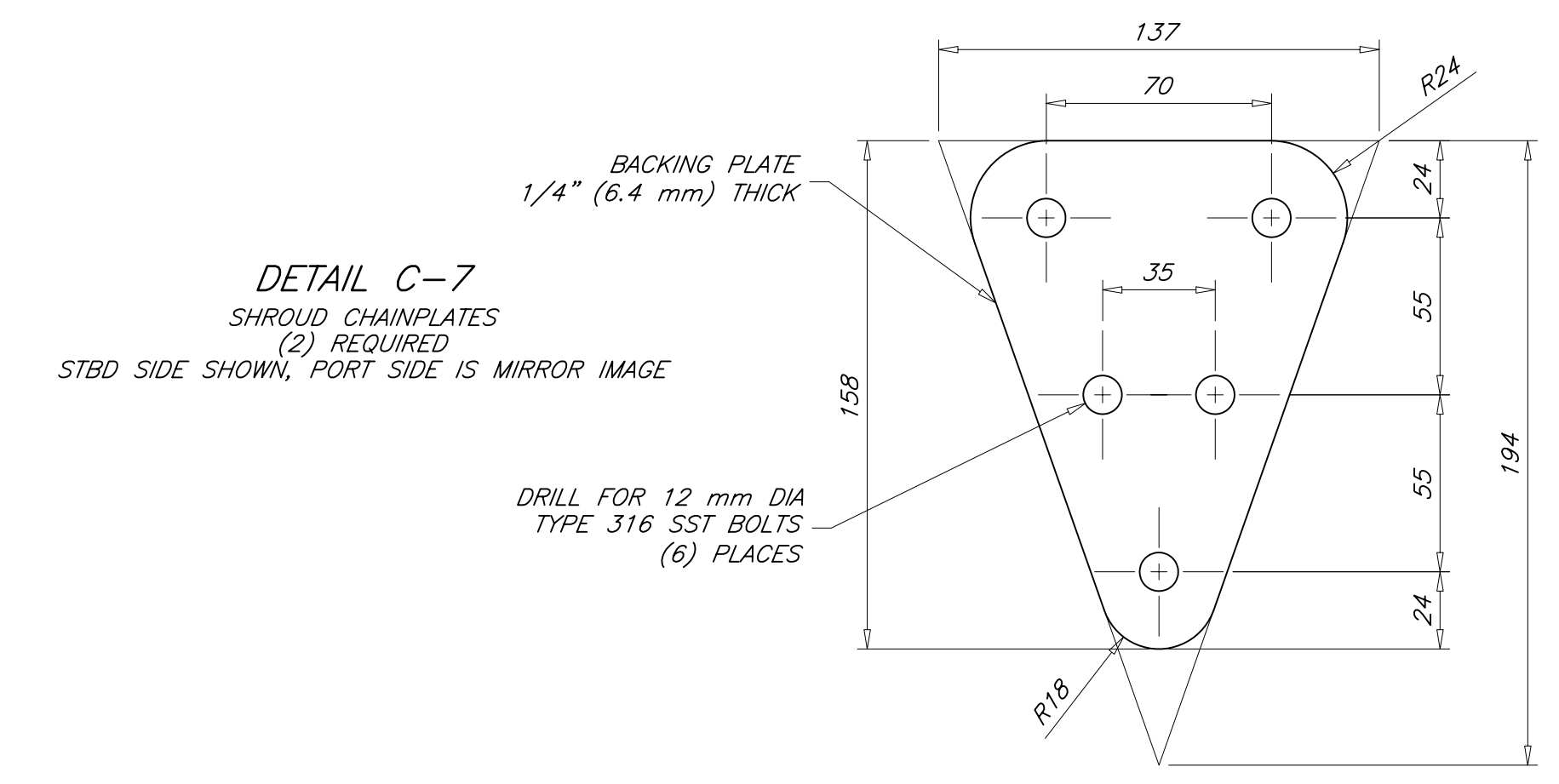
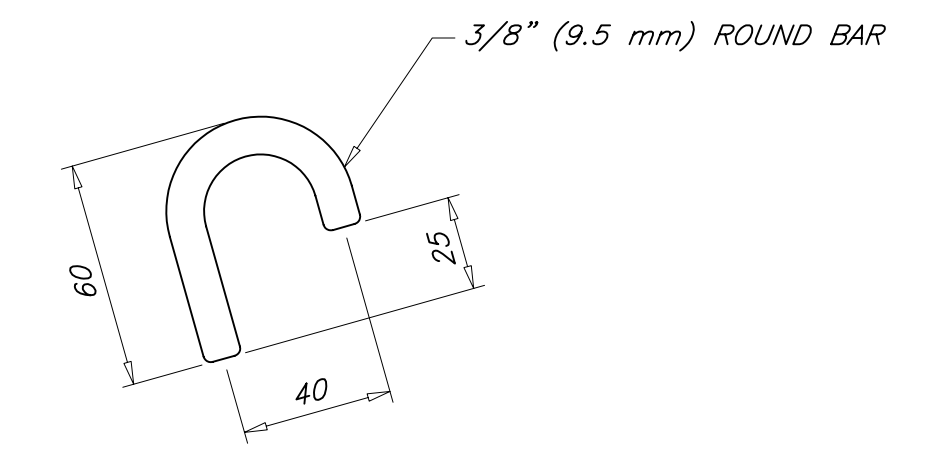
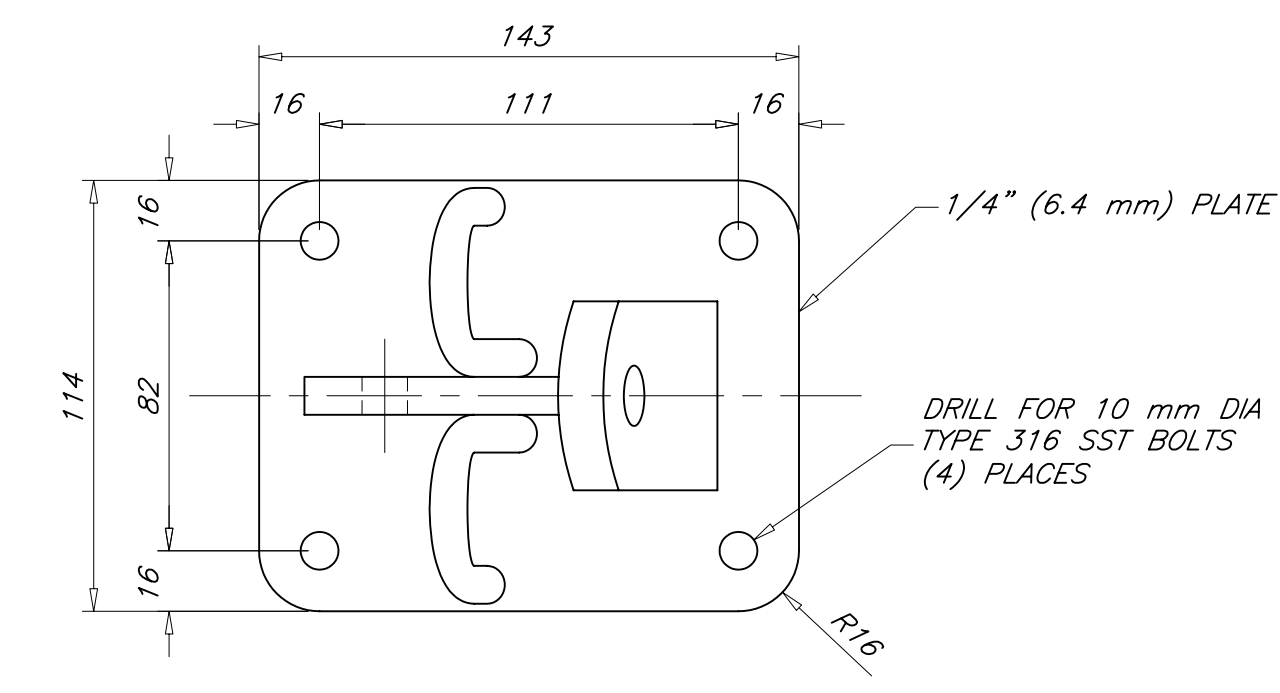
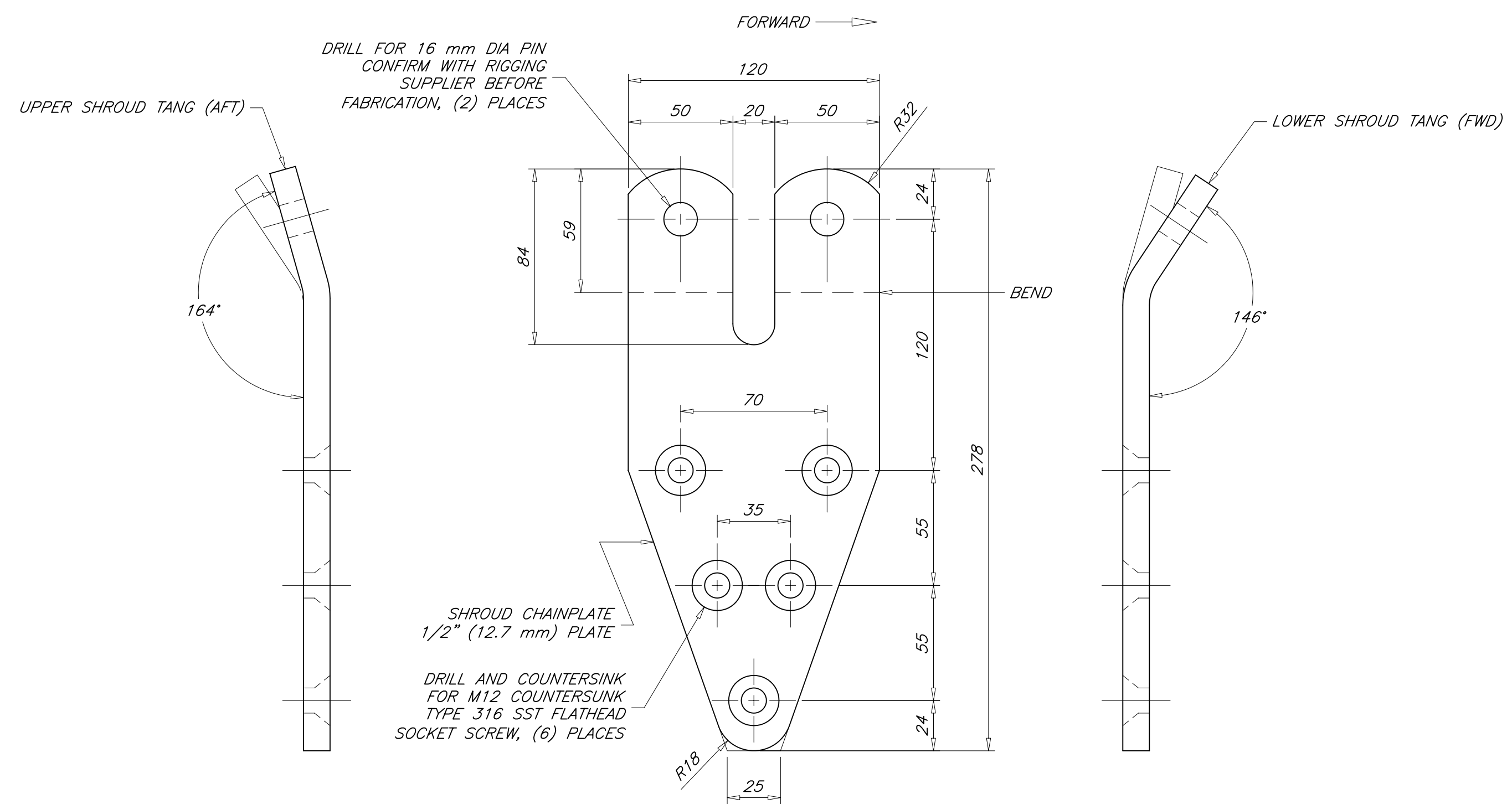


REVISIONS				
ZONE	REV	DESCRIPTION	DATE	APPROVED
ALL	-	ORIGINAL ISSUE	19 AUG 09	P. KOTZEBUE



- GENERAL NOTES**
1. WELDED PARTS TO BE JOINED BY CONTINUOUS FILLET WELDS. WELD PROCEDURE AND SIZE OF WELDS TO BE DETERMINED BY FABRICATOR.
 2. MATERIAL IS TYPE 316 OR 316L STAINLESS STEEL.
MINIMUM TENSILE STRENGTH = 415 MPa (60,000 psi)
MINIMUM SHEAR STRENGTH = 275 MPa (40,000 psi)
MINIMUM BEARING STRENGTH = 620 MPa (90,000 psi)
 3. FASTENERS ARE TYPE 316 STAINLESS STEEL.



THIS DRAWING REMAINS THE PROPERTY OF PAUL R. KOTZEBUE, PE AND MAY NOT BE USED FOR ANY PURPOSE WITHOUT WRITTEN CONSENT.

DRAFTER: PK		DATE: 19 AUG 09		SIZE: ARCH D		DWG NO: 03-D2		REV: -	
CHECKER: PK		DATE: 19 AUG 09		SCALE: 1 : 2		SWBS: - -		SHEET: 1 OF 1	

NO	TITLE	DWG NO
REFERENCES		
STOCK PLANS		
13.5 METER PLYWOOD SLOOP		
CHAINPLATES		

PAUL R. KOTZEBUE, PE
MECHANICAL ENGINEER
Encinitas, California USA